
Product Datasheet

APC10 antibody (orb345389)

Description

APC10 antibody

Species/Host

Rabbit

Reactivity

Human

Conjugation

Unconjugated

Tested Applications

ELISA, IHC, IP, WB

Immunogen

This affinity purified antibody was prepared from whole rabbit serum produced by repeated immunizations with a synthetic peptide corresponding to amino acids near the amino terminus of human APC10.

Preservatives

0.01% (w/v) Sodium Azide

Form/Appearance

Liquid (sterile filtered)

Concentration

1.50 mg/mL

Storage

Store vial at -20° C prior to opening. Aliquot contents and freeze at -20° C or below for extended storage. Avoid cycles of freezing and thawing. Centrifuge product if not completely clear after standing at room temperature. This product is stable for several weeks at 4° C as an undiluted liquid. Dilute only prior to immediate use.

Note

For research use only

Application notes

This affinity purified antibody has been tested for use in ELISA against the immunizing peptide and by western blotting against various cell lysates. Reactivity in other immunoassays is unknown.

Isotype

IgG

Clonality

Polyclonal

Purity

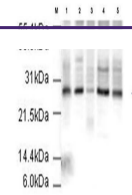
This is an affinity purified antibody produced by immunoaffinity chromatography using the immunizing peptide after immobilization to a solid phase.

Uniprot ID
[Q9UM13](#)
NCBI
[150170706](#)
Dilution Range

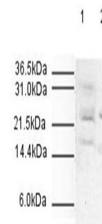
ELISA: 1:15,000 - 1:80,000, IHC: 1:250 - 1:1,000, IP: 1:100, WB: 1:500 - 1:1,500

Expiration Date

12 months from date of receipt.



Western Blot of Affinity Purified Rabbit...



Western Blot of Affinity Purified Rabbit...