
Product Datasheet

CHK2 (phospho-T68) antibody (orb345384)

Description

CHK2 (phospho-T68) antibody

Species/Host

Rabbit

Reactivity

Human

Conjugation

Unconjugated

Tested

ELISA, IP, WB

Applications
Immunogen

This affinity purified antibody was prepared from whole rabbit serum produced by repeated immunizations with a synthetic peptide corresponding to an internal region near aa 50-75 of Human CHK2.

Preservatives

0.01% (w/v) Sodium Azide

Form/Appearance

Liquid (sterile filtered)

Concentration

1.0mg/ml

Storage

Store vial at -20° C prior to opening. Aliquot contents and freeze at -20° C or below for extended storage. Avoid cycles of freezing and thawing. Centrifuge product if not completely clear after standing at room temperature. This product is stable for several weeks at 4° C as an undiluted liquid. Dilute only prior to immediate use.

Note

For research use only

Application notes

This affinity purified antibody has been tested for use in ELISA and by western blot. Specific conditions for reactivity should be optimized by the end user. Expect a band approximately 61 kDa in size corresponding to CHK2 by western blotting in the appropriate cell lysate or extract. Less than 1% reactivity is observed against the non-phosphorylated form of the immunizing peptide. This antibody is phospho specific for pT68 of CHK2.

Isotype

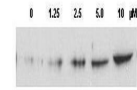
IgG

Clonality

Polyclonal

Purity

This affinity purified antibody is directed against the phosphorylated form of human CHK2 at the pT68 residue. The product was affinity purified from monospecific antiserum by immunoaffinity purification. Antiserum was first purified against the phosphorylated form of the immunizing peptide. The resultant affinity purified antibody was then cross adsorbed against the non-phosphorylated form of the immunizing peptide. Reactivity occurs against human CHK2 pT68 protein and the antibody is specific for the



Western blot
using
Biorbyt's
Affinity Pu...