
Product Datasheet

AKT pS473 antibody (orb345378)

Description

AKT pS473 antibody

Species/Host

Rabbit

Reactivity

Human, Mouse, Rat

Conjugation

Unconjugated

Tested

DOT, ELISA, IF, IHC, Multiplex Assay, WB

Applications
Immunogen

Rabbit Anti-AKTpS473 Antibody was prepared by repeated immunizations in rabbits with a synthetic peptide corresponding to a C-terminus region near phospho Serine 473 of the human, mouse, rat and chicken AKT proteins conjugated to KLH.

Preservatives

0.01% (w/v) Sodium Azide

Form/Appearance

Liquid (sterile filtered)

Concentration

1.15 mg/mL

Storage

Store vial at -20° C prior to opening. Aliquot contents and freeze at -20° C or below for extended storage. Avoid cycles of freezing and thawing. Centrifuge product if not completely clear after standing at room temperature. This product is stable for several weeks at 4° C as an undiluted liquid. Dilute only prior to immediate use.

Note

For research use only

Application notes

This AKT antibody is phospho specific for pS473 and is tested in ELISA, western blotting, immunohistochemistry (formalin-fixed paraffin-embedded sections), and immunofluorescence. By immunoblot a single band of the expected apparent molecular weight ~56kDa is observed. For immunohistochemistry no pre-treatment of sample is required.

Isotype

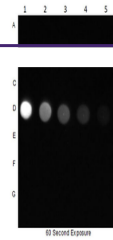
IgG

Clonality

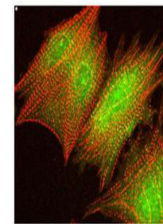
Polyclonal

Purity

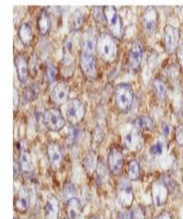
This product was prepared from monospecific antiserum by immunoaffinity chromatography using a phospho peptide coupled to agarose beads followed by solid phase adsorption(s) against a non-phospho peptide and non-specific peptide to remove any unwanted reactivities. Assay by immunoelectrophoresis resulted in a single precipitin arc against anti-Rabbit Serum. This antibody is specific for phosphorylated human AKTpS473. Minimal reactivity occurs against non-



Dot Blot of Rabbit Anti-AKT pS473 Antibo...



Immunofluorescence Confocal Microscopy O...



Immunohistochemistry at higher magnifica...