

---

## Product Datasheet

### NFkB p65 (phospho-S276) antibody (orb345375)

**Description**

NFkB p65 (phospho-S276) antibody

**Species/Host**

Rabbit

**Reactivity**

Human

**Conjugation**

Unconjugated

**Tested**

ELISA, IHC, IP, WB

**Applications**
**Immunogen**

NFkB p65 (Rel A) peptide corresponding to an internal region near phospho Serine 276 of the human protein conjugated to Keyhole Limpet Hemocyanin (KLH).

**Preservatives**

0.01% (w/v) Sodium Azide

**Form/Appearance**

Liquid (sterile filtered)

**Concentration**

1.0 mg/mL

**Storage**

Store vial at -20° C prior to opening. Aliquot contents and freeze at -20° C or below for extended storage. Avoid cycles of freezing and thawing. Centrifuge product if not completely clear after standing at room temperature. This product is stable for several weeks at 4° C as an undiluted liquid. Dilute only prior to immediate use.

**Note**

For research use only

**Application notes**

Anti-NFkB phospho specific polyclonal antibody reacts with human pS276 p65 and shows minimal reactivity when tested by western blot with non-phosphorylated p65 and minimal reactivity when tested by ELISA against the non-phosphorylated form of the immunizing peptide. For immunoblotting a 1:1,000 dilution is recommended. A 65 kDa band corresponding to human p65 is detected. HeLa cells or TNF inducible KBM-5 cells can be used as a positive control. Although not tested, this antibody is likely functional in immunohistochemistry and immunoprecipitation.

**Isotype**

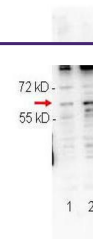
IgG

**Clonality**

Polyclonal

**Purity**

Rabbit Anti-NFkB p65 (RelA) pS276 Antibody was prepared from monospecific antiserum by immunoaffinity purification. Antiserum was first purified against the phosphorylated form of the immunizing peptide. The resultant affinity purified antibody was then cross-adsorbed against the non-phosphorylated form of the immunizing peptide. This



Biorbyt  
Affinity  
purified  
Anti-NFkB  
p65 ...