
Product Datasheet

Beta Amyloid antibody (orb345372)

Description

Beta Amyloid antibody

Species/Host

Rabbit

Reactivity

Human, Mouse

Conjugation

Unconjugated

Tested Applications

ELISA, IF, IHC, WB

Immunogen

This antibody was affinity purified from whole rabbit serum prepared by repeated immunizations with a synthetic peptide corresponding to an extracellular region of human beta amyloid conjugated to KLH using maleimide.

Preservatives

0.01% (w/v) Sodium Azide

Form/Appearance

Liquid (sterile filtered)

Concentration

0.93mg/mL

Storage

Store vial at -20° C or below prior to opening. This vial contains a relatively low volume of reagent (25 µL). To minimize loss of volume dilute 1:10 by adding 225 µL of the buffer stated above directly to the vial. Recap, mix thoroughly and briefly centrifuge to collect the volume at the bottom of the vial. Use this intermediate dilution when calculating final dilutions as recommended below. Store the vial at -20°C or below after dilution. Avoid cycles of freezing and thawing.

Note

For research use only

Application notes

Affinity purified anti-beta amyloid has been tested by ELISA, IHC, WB, and IF. A 45.8kDa band is detected in western blot using whole tissue extracts and lysates from mouse and human. In general, we recommend the use of 4% PFA or 10% formalin for fixation of tissues with IHC-paraffin or IHC-frozen application of this antibody.

Isotype

IgG

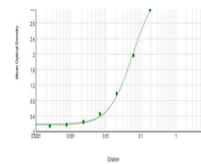
Clonality

Polyclonal

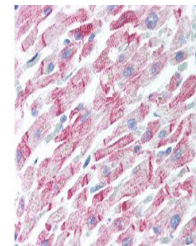
Purity

This affinity purified antibody is directed against extracellular region of beta amyloid and is useful in determining its presence in various assays. Polyclonal anti-beta amyloid detects human and mouse beta amyloid. Blast analysis of the sequence of the immunogen shows 100% identity with Human, Guinea Pig, Pig, Cyno Monkey, Dog, Polar Bear, Rabbit, Chimp, Squirrel monkey, and

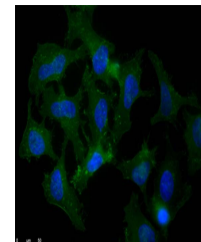
Anti-Beta Amyloid Sensitivity



ELISA results of purified Rabbit anti-Be...



Human Heart (formalin-fixed, paraffin-em...



Immunofluorescence microscopy of Rabbit ...