

---

## Product Datasheet

### Laminin antibody (orb345361)

**Description**

Laminin antibody

**Species/Host**

Rabbit

**Reactivity**

Human

**Conjugation**

Unconjugated

**Tested Applications**

ELISA, IHC, IP, WB

**Immunogen**

Anti-Laminin Antibody was produced by repeated immunizations with a mixture of synthetic peptides corresponding to regions of adherence on laminin.

**Preservatives**

0.01% (w/v) Sodium Azide

**Form/Appearance**

Liquid (sterile filtered)

**Concentration**

1.0 mg/mL

**Storage**

Store vial at 4° C prior to opening. This product is stable at 4° C as an undiluted liquid. Dilute only prior to immediate use. For extended storage, mix with an equal volume of glycerol, aliquot contents and freeze at -20° C or below. Avoid cycles of freezing and thawing.

**Note**

For research use only

**Application notes**

Anti-Laminin (RABBIT) Antibody has been tested by IHC and was assayed by immunoblot and found to be reactive against Laminin at a dilution of 1:5,000 to 1:10,000. Anti-Laminin (Human) (RABBIT) Antibody was also assayed against 1.0 µg of Laminin in a standard ELISA using Peroxidase conjugated Affinity Purified anti-Rabbit IgG [H&L] (Goat) code #611-1302 and (ABTS (2,2'-azino-bis-[3-ethylbenthiiazoline-6-sulfonic acid]) code # ABTS-100 as a substrate for 30 minutes at room temperature. A working dilution of 1:4,000 to 1:8,000 of the stock concentration is suggested for this product. For immunohistochemistry on paraffin embedded tissue dilute the product 1:50 to 1:200. Specific conditions should be optimized by researcher.

**Isotype**

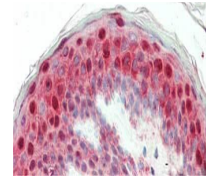
IgG

**Clonality**

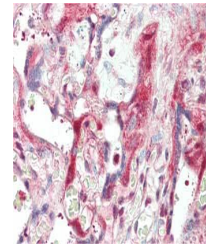
Polyclonal

**Purity**

Anti-Laminin has been prepared by immunoaffinity chromatography using immobilized human placental laminin followed by extensive cross-adsorption against human serum proteins and collagen and non-collagen extracellular matrix proteins to remove



Immunohistochemistry of rabbit anti-Lami...



Immunohistochemistry of rabbit anti-Lami...