
Product Datasheet

Collagen Type III antibody (orb345351)

Description

Collagen Type III antibody

Species/Host

Rabbit

Reactivity

Bovine, Human, Porcine

Conjugation

Unconjugated

Tested

DOT, ELISA, FC, IF, IHC, IP, WB

Applications
Immunogen

Collagen Type III from human and bovine placenta

Preservatives

0.01% (w/v) Sodium Azide

Form/Appearance

Liquid (sterile filtered)

Concentration

1.16 mg/ml

Storage

Store vial at -20° C or below prior to opening. This vial contains a relatively low volume of reagent (25 µL). To minimize loss of volume dilute 1:10 by adding 225 µL of the buffer stated above directly to the vial. Recap, mix thoroughly and briefly centrifuge to collect the volume at the bottom of the vial. Use this intermediate dilution when calculating final dilutions as recommended below. Store the vial at -20°C or below after dilution. Avoid cycles of freezing and thawing.

Note

For research use only

Application notes

Anti-Collagen Type III has been tested by dot Blot, western blot, and IHC and is useful for indirect trapping ELISA for quantitation of antigen in serum using a standard curve, immunoprecipitation, native (non-denaturing, non-dissociating) PAGE, immunohistochemistry, and western blotting for highly sensitive qualitative analysis.

Isotype

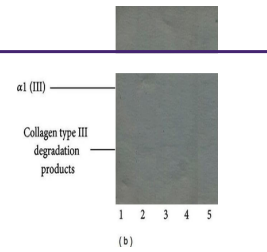
IgG

Clonality

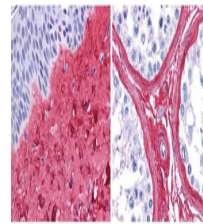
Polyclonal

Purity

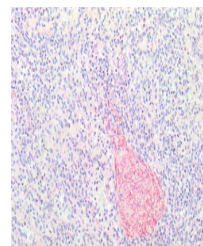
Collagen III Antibody has been prepared by immunoaffinity chromatography using immobilized antigens. Some class-specific anti-collagens may be specific for three-dimensional epitopes which may result in diminished reactivity with denatured collagen or formalin-fixed, paraffin embedded tissues. This antibody reacts with most mammalian Type III collagens and has expected cross-reactivity with Type I and negligible cross reactivity with Type II, IV, V or VI collagens. Non-specific cross-reaction of anti-collagen antibodies



(a) Typical electropherogram of α (I) s...



Biorbyt anti collagen III antibody (1:40...



Immunohistochemistry of Rabbit Anti-Coll...