
Product Datasheet

Collagen I antibody (orb345344)

Description

Collagen I antibody

Species/Host

Rabbit

Reactivity

Bovine, Human, Mouse, Porcine, Rat

Conjugation

Unconjugated

Tested Applications

DOT, ELISA, FC, FLISA, IF, IHC, IP, WB

Immunogen

Collagen Type I from human and bovine placenta

Preservatives

0.01% (w/v) Sodium Azide

Form/Appearance

Liquid (sterile filtered)

Concentration

1.00 mg/mL

Storage

Store vial at 4° C prior to opening. This product is stable at 4° C as an undiluted liquid. Dilute only prior to immediate use. For extended storage, mix with an equal volume of glycerol, aliquot contents and freeze at -20° C or below. Avoid cycles of freezing and thawing.

Note

For research use only

Application notes

Anti-Collagen Type I has been tested by dot blot and IHC and are useful for indirect trapping ELISA for quantitation of antigen in serum using a standard curve, immunoprecipitation, native (non-denaturing, non-dissociating) PAGE, immunohistochemistry, Immunofluorescence, FLOW, and western blotting for highly sensitive qualitative analysis.

Isotype

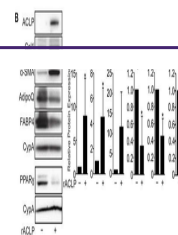
IgG

Clonality

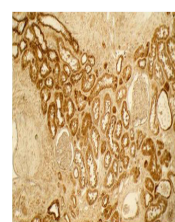
Polyclonal

Purity

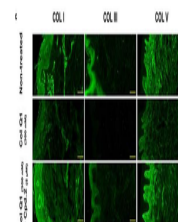
COLLAGEN I Antibody has been prepared by immunoaffinity chromatography using immobilized antigens. Some class-specific anti-collagens may be specific for three-dimensional epitopes which may result in diminished reactivity with denatured collagen or formalin-fixed, paraffin embedded tissues. This antibody reacts with most mammalian Type I collagens and has expected cross-reactivity with Type III and negligible cross reactivity with Type II, IV, V or VI collagens. Non-specific cross-reaction of anti-collagen antibodies with other human serum proteins or non-collagen extracellular matrix proteins has not been tested.

Uniprot ID
[P02452](#)
NCBI
[NP_000079.2](#)


ACLP signaling represses adipogenesis. A...



Biorbyt's Affinity Purified anti-Collage...



Compound 2 suppressed the collagenolytic...