
Product Datasheet

RING1B antibody (orb345298)

Description

RING1B antibody

Species/Host

Goat

Reactivity

Chinese Hamster, Human, Mouse

Conjugation

Unconjugated

Tested

ELISA, IF, Multiplex Assay, WB

Applications
Immunogen

RING1B Antibody was prepared from whole goat serum produced by repeated immunizations with a synthetic peptide corresponding to an internal region near aa 180-205 of human RING1B protein.

Preservatives

0.01% (w/v) Sodium Azide

Form/Appearance

Liquid (sterile filtered)

Concentration

1.1 mg/mL

Storage

Store vial at -20° C prior to opening. Aliquot contents and freeze at -20° C or below for extended storage. Avoid cycles of freezing and thawing. Centrifuge product if not completely clear after standing at room temperature. This product is stable for several weeks at 4° C as an undiluted liquid. Dilute only prior to immediate use.

Note

For research use only

Application notes

Anti-RING1B purified antibody has been tested for use in ELISA, immunofluorescence, and by western blot. Specific conditions for reactivity should be optimized by the end user. Expect a band approximately 38 kDa in size corresponding to RING1B by western blotting in the appropriate cell lysate or extract.

Isotype

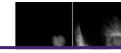
IgG

Clonality

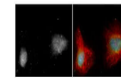
Polyclonal

Purity

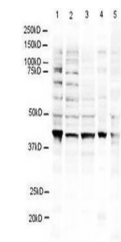
Affinity purified Anti-RING1B antibody is directed against human RING1B protein. The product was affinity purified from monospecific antiserum by immunoaffinity purification. A BLAST analysis was used to suggest reactivity with this protein from human, chimpanzee, orangutan, mouse, rat, dog, bovine, frog and chicken based on 100% homology for the immunogen sequence. Expect cross reactivity with RING1B from zebrafish, as only a single amino acid residue changes within the immunogen sequence (92% positive by BLAST). Cross reactivity with RING1B homologues from other sources has not been determined.



DAPI Nuclear staining Tubulin antibody staining (colocalized)



RING1B antibody Merged pattern DAPI blue Tubulin red RING1B green

Immunofluorescence Microscopy of Goat an...

Western blot using Biorbyt's Affinity Pu...