

## Product Datasheet

### AP2A Antibody (orb345293)

<b>Catalog Number</b>	orb345293
<b>Description</b>	AP2A antibody
<b>Species/Host</b>	Goat
<b>Reactivity</b>	Human
<b>Conjugation</b>	Unconjugated
<b>Tested Applications</b>	ELISA, IP, WB
<b>Immunogen</b>	This affinity purified antibody was prepared from whole goat serum produced by repeated immunizations with a synthetic peptide corresponding to the N-Terminal region near aa 1-25 of Human AP2A1 and AP2A2 proteins.
<b>Preservatives</b>	0.01% (w/v) Sodium Azide
<b>Form/Appearance</b>	Liquid (sterile filtered)
<b>Concentration</b>	1.7 mg/mL
<b>Storage</b>	Store vial at -20° C prior to opening. Aliquot contents and freeze at -20° C or below for extended storage. Avoid cycles of freezing and thawing. Centrifuge product if not completely clear after standing at room temperature. This product is stable for several weeks at 4° C as an undiluted liquid. Dilute only prior to immediate use.
<b>Note</b>	For research use only

#### Biorbyt Ltd.

7 Signet Court, Swann's Road,  
Cambridge, CB5 8LA, United Kingdom  
Email: [info@biorbyt.com](mailto:info@biorbyt.com), [support@biorbyt.com](mailto:support@biorbyt.com)  
Phone: [+44 \(0\) 1223 859-353](tel:+44(0)1223859353) | Fax: [+1 \(415\) 651-8558](tel:+1(415)6518558)

#### Biorbyt LLC.

68 TW Alexander Drive,  
Durham, NC, 27713, United States  
Email: [info@biorbyt.com](mailto:info@biorbyt.com), [support@biorbyt.com](mailto:support@biorbyt.com)  
Phone: [+1 \(415\) 906-5211](tel:+1(415)9065211) | Fax: [+1 \(415\) 651-8558](tel:+1(415)6518558)

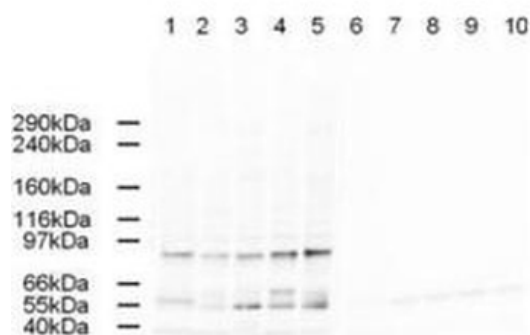
<b>Application notes</b>	This affinity purified antibody has been tested for use in ELISA and by western blot. Specific conditions for reactivity should be optimized by the end user. Expect a band approximately 104-107 kDa in size corresponding to AP2A1 or AP2A2 proteins by western blotting in the appropriate cell lysate or extract. Multiple isoforms of each subunit exist for these proteins. The immunogen sequence is found in both AP2A1 and AP2A2. This antibody recognizes a band of approximately 100 kDa in multiple human cell lines and specific reactivity can be blocked with the immunizing peptide.
<b>Isotype</b>	IgG
<b>Clonality</b>	Polyclonal
<b>Antibody Type</b>	Primary Antibody
<b>Purity</b>	This affinity purified antibody is directed against human AP2A. The product was affinity purified from antiserum by immunoaffinity purification. A BLAST analysis was used to suggest reactivity with AP2A1 and AP2A2 protein from human, chimpanzee, orangutan, mouse, rat, chicken and dog based on 100% homology for the immunogen sequence. Cross reactivity with AP2A proteins from other sources is not known.
<b>Uniprot ID</b>	<b>O95782</b>
<b>NCBI</b>	<b>27477041</b>
<b>Dilution Range</b>	ELISA: 1:5,000 - 1:20,000, IP: 1:100, WB: 1:500 - 1:2,000
<b>Expiration Date</b>	12 months from date of receipt.

**Biorbyt Ltd.**

7 Signet Court, Swann's Road,  
Cambridge, CB5 8LA, United Kingdom  
Email: [info@biorbyt.com](mailto:info@biorbyt.com), [support@biorbyt.com](mailto:support@biorbyt.com)  
Phone: [+44 \(0\) 1223 859-353](tel:+44(0)1223859353) | Fax: [+1 \(415\) 651-8558](tel:+1(415)6518558)

**Biorbyt LLC.**

68 TW Alexander Drive,  
Durham, NC, 27713, United States  
Email: [info@biorbyt.com](mailto:info@biorbyt.com), [support@biorbyt.com](mailto:support@biorbyt.com)  
Phone: [+1 \(415\) 906-5211](tel:+1(415)9065211) | Fax: [+1 \(415\) 651-8558](tel:+1(415)6518558)



Western blot using Biorbyt's Affinity Purified anti-AP2A antibody shows detection of a band just below 100 kDa corresponding to Human AP2A1. Lane 1: HeLa nuclear extract (p/n orb348671), Lane 2: HeLa (p/n orb348668), Lane 3: 293 (orb348669), Lane 4: A431 (p/n orb348665), and Lane 5: Jurkat whole cell lysate (p/n orb348674). In lanes 6-10 the antibody was preincubated with 1 µg/ml of the immunizing peptide which effectively blocks the specific reactivity of this antibody with AP2A. Approximately 20 µg of each lysate was run on a SDS-PAGE and transferred onto nitrocellulose followed by reaction with a 1:500 dilution of anti-AP2A antibody. Detection occurred using a 1:5000 dilution of HRP-labeled Rabbit anti-Goat IgG (p/n orb346990) for 1 hour at room temperature. A chemiluminescence system was used for signal detection (Roche) using a 60-sec exposure time.

**Biorbyt Ltd.**

7 Signet Court, Swann's Road,  
Cambridge, CB5 8LA, United Kingdom  
Email: [info@biorbyt.com](mailto:info@biorbyt.com), [support@biorbyt.com](mailto:support@biorbyt.com)  
Phone: [+44 \(0\) 1223 859-353](tel:+44(0)1223859353) | Fax: [+1 \(415\) 651-8558](tel:+1(415)6518558)

**Biorbyt LLC.**

68 TW Alexander Drive,  
Durham, NC, 27713, United States  
Email: [info@biorbyt.com](mailto:info@biorbyt.com), [support@biorbyt.com](mailto:support@biorbyt.com)  
Phone: [+1 \(415\) 906-5211](tel:+1(415)9065211) | Fax: [+1 \(415\) 651-8558](tel:+1(415)6518558)