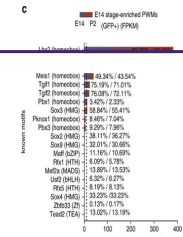
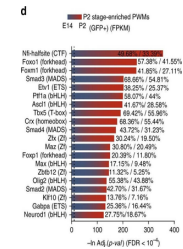

Product Datasheet

GFP antibody (orb345288)

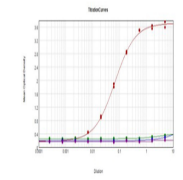
| Description | GFP antibody |
|----------------------------|--|
| Species/Host | Goat |
| Reactivity | Other |
| Conjugation | Unconjugated |
| Tested Applications | ELISA, IF, IHC, IP, WB |
| Immunogen | The immunogen is a Green Fluorescent Protein (GFP) fusion protein corresponding to the full length amino acid sequence (246aa) derived from the jellyfish <i>Aequorea victoria</i> . |
| Preservatives | 0.01% (w/v) Sodium Azide |
| Form/Appearance | Liquid (sterile filtered) |
| Concentration | 1.1 mg/mL |
| Storage | Store vial at -20° C or below prior to opening. This vial contains a relatively low volume of reagent (25 µL). To minimize loss of volume dilute 1:10 by adding 225 µL of the buffer stated above directly to the vial. Recap, mix thoroughly and briefly centrifuge to collect the volume at the bottom of the vial. Use this intermediate dilution when calculating final dilutions as recommended below. Store the vial at -20°C or below after dilution. Avoid cycles of freezing and thawing. |
| Note | For research use only |
| Application notes | Anti-GFP is designed to detect GFP and its variants. Goat Anti-GFP has been tested by ELISA, SDS-PAGE, Western blot, and Immunofluorescence. This product is ideal for western blotting, ELISA, immunofluorescence, IHC, and IP. This antibody can be used to detect GFP by ELISA (sandwich or capture) for the direct binding of antigen and recognizes wild type, recombinant and enhanced forms of GFP. Biotin conjugated polyclonal anti-GFP used in a sandwich ELISA is well suited to titrate GFP in solution using this antibody in combination with Rockland's monoclonal anti-GFP (600-301-215) using either form of the antibody as the capture or detection antibody. However, use the monoclonal form only for the detection of wild type or recombinant GFP as this form does not sufficiently detect 'enhanced' GFP. The detection antibody is typically conjugated to biotin and subsequently reacted with streptavidin-HRP (code # S000-03). Fluorochrome conjugated polyclonal anti-GFP can be used to detect GFP by immunofluorescence microscopy in prokaryotic (E.coli) and eukaryotic (CHO cells) expression systems and detects GFP containing inserts. Significant amplification of signal is achieved using fluorochrome |



Binding sites for transcription factors ...



Binding sites for transcription factors ...



ELISA results of purified Goat Anti-GFP ...