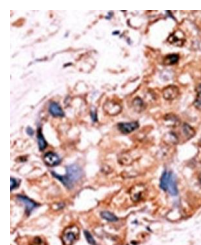
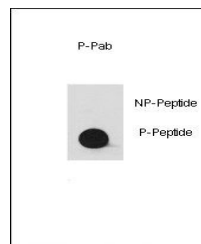


Product Datasheet

YES1 (phospho-Tyr537) antibody (orb34526)

Description	Peptide affinity purified rabbit polyclonal antibody.
Species/Host	Rabbit
Reactivity	Human
Conjugation	Unconjugated
Tested Applications	DOT, IHC-P
Immunogen	Synthetic Peptide
Target	This SRC Antibody is generated from rabbits immunized with a KLH conjugated synthetic phosphopeptide corresponding to amino acid residues surrounding Y530 of human SRC.
Form/Appearance	Purified polyclonal antibody supplied in PBS with 0.09% (W/V) sodium azide. This antibody is purified through a protein A column, followed by peptide affinity purification.
Storage	Maintain refrigerated at 2-8°C for up to 2 weeks. For long term storage store at -20°C in small aliquots to prevent freeze-thaw cycles
Note	For research use only
Isotype	Rabbit IgG
Clonality	Polyclonal
Uniprot ID	P12931 , P07947
NCBI	NP_005408.1 , NP_938033.1
Dilution Range	DOT: 1:500, IHC-P: 1:50-100
Expiration Date	12 months from date of receipt.



Immunohistochemical staining of paraffin...