

Product Datasheet

IFN beta antibody (orb345259)

Description

IFN beta antibody

Species/Host

Rabbit

Reactivity

Porcine

Conjugation

Unconjugated

Tested Applications

ELISA, WB

Immunogen

This protein A purified antibody was prepared from whole rabbit antiserum produced by repeated immunizations with a recombinant protein raised in yeast corresponding to 164 amino acids of the mature swine IFN beta protein.

Preservatives

0.01% (w/v) Sodium Azide

Form/Appearance

Lyophilized

Concentration

1.0 mg/mL

Storage

Store vial at 4° C prior to restoration. For extended storage aliquot contents and freeze at -20° C or below. Avoid cycles of freezing and thawing. Centrifuge product if not completely clear after standing at room temperature. This product is stable for several weeks at 4° C as an undiluted liquid. Dilute only prior to immediate use.

Note

For research use only

Application notes

This protein A purified IFN-beta antibody has been tested by ELISA and Western blotting. Specific conditions for reactivity should be optimized by the end user. Expect a band approximately 19.5 kDa in size corresponding to swine IFN beta by western blotting in the appropriate cell lysate or extract.

Isotype

IgG

Clonality

Polyclonal

Purity

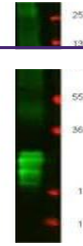
This product was protein A purified from monospecific antiserum by chromatography. This antibody is specific for swine IFN beta protein. A BLAST analysis was used to suggest cross-reactivity with IFN beta from *Sus scrofa* (pig), *Potamochoerus larvatus koiropotamus*, *Potamochoerus larvatus* (Bushpig), and *Phacochoerus africanus* (warthog) sources based on 100% homology with the immunizing sequence. Cross-reactivity with IFN beta from other sources has not been determined.

Uniprot ID

[Q29412](#)

NCBI

[NP_001003923.1](#)



Western blot using Biorbyt's protein-A p...