

Product Datasheet

MIP 1 beta antibody (orb345257)

Description

MIP 1 beta antibody

Species/Host

Rabbit

Reactivity

Porcine

Conjugation

Unconjugated

Tested

ELISA, WB

Applications
Immunogen

This protein-A purified antibody was prepared from whole rabbit serum produced by repeated immunizations with recombinant protein raised in yeast, corresponding to the 69 amino acids of the mature swine CCL4/MIP1 β protein.

Preservatives

0.01% (w/v) Sodium Azide

Form/Appearance

Liquid (sterile filtered)

Concentration

1.0 mg/mL

Storage

Store vial at 4° C upon receipt. For extended storage aliquot contents and freeze at -20° C or below. Avoid cycles of freezing and thawing. Centrifuge product if not completely clear after standing at room temperature. This product is stable for several weeks at 4° C as an undiluted liquid. Dilute only prior to immediate use.

Note

For research use only

Application notes

This protein-A purified MIP-1 β antibody has been tested by western blot and is suitable for ELISA. Specific conditions for reactivity should be optimized by the end user. Expect a band approximately 7.8 kDa in size corresponding to swine CCL4 protein by western blotting in the appropriate cell lysate or extract.

Isotype

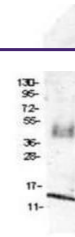
IgG

Clonality

Polyclonal

Purity

This product was Protein-A purified from monospecific antiserum by chromatography. This antibody is specific for swine CCL4 protein. A BLAST analysis was used to suggest cross-reactivity with CCL4 from swine sources based on 100% homology with the immunizing sequence. Partial reactivity is expected against horse and panda CCL4 based on 90% homology. Cross-reactivity with CCL4 from other sources has not been determined. The swine CCL4 sequence is also 86% homologous to swine CCL3L1.

Uniprot ID
Q711P4


Western blot using Biorbyt's protein-A p...