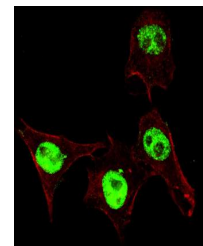
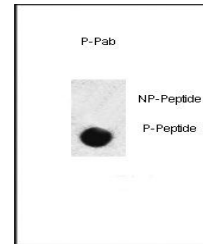


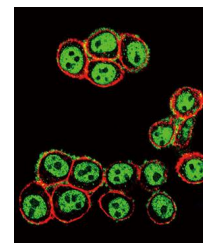
Product Datasheet

SMAD3 (phospho-Ser208) antibody (orb34521)

Description	Rabbit polyclonal antibody against Smad3
Species/Host	Rabbit
Reactivity	Human
Conjugation	Unconjugated
Tested Applications	DOT, IF
Immunogen	Synthetic Peptide
Target	SMAD3
Form/Appearance	Purified polyclonal antibody supplied in PBS with 0.09% (W/V) sodium azide. This antibody is purified through a protein A column, followed by peptide affinity purification.
Storage	Maintain refrigerated at 2-8°C for up to 2 weeks. For long term storage store at -20°C in small aliquots to prevent freeze-thaw cycles
Note	For research use only
Isotype	Rabbit IgG
Clonality	Polyclonal
MW	48081
Uniprot ID	P84022
NCBI	NP_005893.1 , NP_001138576.1 , NP_001138574.1 , NP_001138575.1
Dilution Range	IF/ICC: 1:10-50, DOT: 1:500
Expiration Date	12 months from date of receipt.



Immunofluorescence analysis of HeLa cell...



Immunofluorescence analysis of HeLa cell...