

---

## Product Datasheet

### Esrp-1/2 antibody (orb345207)

**Description**

Esrp-1/2 antibody

**Species/Host**

Mouse

**Reactivity**

Mouse

**Conjugation**

Unconjugated

**Tested**

ELISA, WB

**Applications**
**Immunogen**

Anti-Esrp-1/2 was produced by repeated immunizations of full length recombinant mouse Esrp-1 fusion protein.

**Preservatives**

0.01% (w/v) Sodium Azide

**Form/Appearance**

Liquid (sterile filtered)

**Concentration**

1.0 mg/mL

**Storage**

Store vial at -20° C or below prior to opening. This vial contains a relatively low volume of reagent (25 µL). To minimize loss of volume dilute 1:10 by adding 225 µL of the buffer stated above directly to the vial. Recap, mix thoroughly and briefly centrifuge to collect the volume at the bottom of the vial. Use this intermediate dilution when calculating final dilutions as recommended below. Store the vial at -20°C or below after dilution. Avoid cycles of freezing and thawing.

**Note**

For research use only

**Application notes**

This protein-A purified antibody has been tested for use western blotting. Specific conditions for reactivity should be optimized by the end user. Expect a band approximately 75.5 kDa in size corresponding to Esrp-1 and 77.4 kDa in size corresponding to Esrp-2 by western blotting in the appropriate cell lysate or extract.

**Isotype**

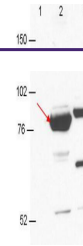
IgG2b

**Clonality**

Monoclonal

**Purity**

This antibody was purified from tissue culture supernatant by Protein-A chromatography followed by extensive dialysis against the buffer stated above. This antibody reacts with both mouse Esrp-1 and Esrp-2 proteins. A BLAST analysis of the immunizing protein sequence shows 100% homology with Esrp-1 from mouse and a 91% sequence homology with Esrp-1 from human, pig, rat, opossum, horse, cattle, panda, dog, and chimpanzee. The binding epitope of this monoclonal antibody has not been mapped.

**Uniprot ID**
**Q8K0G8**


Anti-Esrp-1/2 antibody by western blot  
S...