
Product Datasheet

Esrp-1/2 antibody (orb345206)

Description

Esrp-1/2 antibody

Species/Host

Mouse

Reactivity

Mouse

Conjugation

Unconjugated

Tested

ELISA, WB

Applications
Immunogen

Anti-Esrp-1/2 was produced by repeated immunizations of full length recombinant mouse Esrp-1 fusion protein.

Preservatives

0.01% (w/v) Sodium Azide

Form/Appearance

Liquid (sterile filtered)

Concentration

1.0 mg/mL

Storage

Store vial at -20° C prior to opening. Aliquot contents and freeze at -20° C or below for extended storage. Avoid cycles of freezing and thawing. Centrifuge product if not completely clear after standing at room temperature. This product is stable for several weeks at 4° C as an undiluted liquid. Dilute only prior to immediate use.

Note

For research use only

Application notes

This protein-A purified antibody has been tested for use western blotting. Specific conditions for reactivity should be optimized by the end user. Expect a band approximately 75.5 kDa in size corresponding to Esrp-1 and 77.4 kDa in size corresponding to Esrp-2 by western blotting in the appropriate cell lysate or extract.

Isotype

IgG1

Clonality

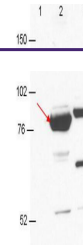
Monoclonal

Purity

This antibody was purified from tissue culture supernatant by Protein-A chromatography followed by extensive dialysis against the buffer stated above. This antibody reacts with both mouse Esrp-1 and Esrp-2 proteins. A BLAST analysis of the immunizing protein sequence shows 100% homology with Esrp-1 from mouse and a 91% sequence homology with Esrp-1 from human, pig, rat, opossum, horse, cattle, panda, dog, and chimpanzee. The binding epitope of this monoclonal antibody has not been mapped.

Uniprot ID
[Q8K0G8](#)
NCBI
[NP_789808.1](#)
Dilution Range

ELISA: 1:750,000, WB: 1:1000



Anti-Esrp-1/2 antibody by western blot S...