

Product Datasheet

MIP-3 alpha antibody (Biotin) (orb345177)

Description

MIP-3 alpha antibody (Biotin)

Species/Host

Rabbit

Reactivity

Human

Conjugation

Biotin

Tested

ELISA, IHC, WB

Applications

Immunogen

MIP-3 alpha Antibody Biotin Conjugated was prepared from whole rabbit serum produced by repeated immunizations with full length recombinant human MIP-3 α protein.

Preservatives

0.01% (w/v) Sodium Azide

Form/Appearance

Lyophilized

Concentration

1.0 mg/mL

Storage

Store MIP-3 alpha Antibody Biotin Conjugated at 4° C prior to restoration. For extended storage aliquot contents and freeze at -20° C or below. Avoid cycles of freezing and thawing. Centrifuge product if not completely clear after standing at room temperature. This product is stable for several weeks at 4° C as an undiluted liquid. Dilute only prior to immediate use.

Note

For research use only

Application notes

This purified antibody has been tested in western blotting and is suitable in ELISA. By western blot a band approximately 11 kDa in size corresponding to human MIP-3 α protein is expected in the appropriate cell lysate or extract. Specific conditions for reactivity should be optimized by the end user.

Isotype

IgG

Clonality

Polyclonal

Purity

Human MIP-3 alpha Antibody Biotin Conjugated was heated to 56°C for 30 minutes. In ELISA and other immunoreactive assays, this antibody will recognize both native and recombinant human MIP-3 α in cell supernatants and certain body fluids. A control of similarly diluted normal rabbit IgG is recommended.

Uniprot ID

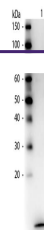
P78556

NCBI

4759076

Dilution Range

ELISA: 1:20,000 - 1:100,000, IHC: 1:1,000-1:5,000, WB: 1:2,000-1:10,000



Western Blot
of Biotin
Conjugated
Rabbit...