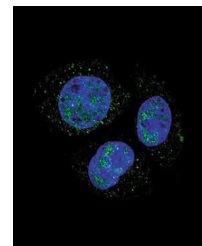
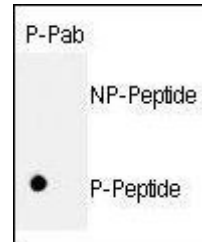


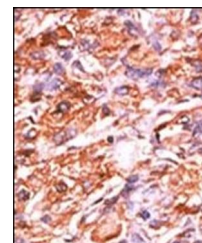
Product Datasheet

Rb (phospho-Ser811) antibody (orb34517)

Description	Rabbit polyclonal to Rb (phospho-Ser811)
Species/Host	Rabbit
Reactivity	Human
Conjugation	Unconjugated
Tested Applications	DOT, IF, IHC-P
Immunogen	Synthetic Peptide
Target	RB1
Form/Appearance	Purified polyclonal antibody supplied in PBS with 0.09% (W/V) sodium azide. This antibody is purified through a protein A column, followed by peptide affinity purification.
Storage	Maintain refrigerated at 2-8°C for up to 2 weeks. For long term storage store at -20°C in small aliquots to prevent freeze-thaw cycles
Note	For research use only
Isotype	Rabbit IgG
Clonality	Polyclonal
MW	106159
Uniprot ID	P06400
NCBI	NP_000312.2
Dilution Range	DOT: 1:500, IHC-P: 1:50-100, IF/ICC: 1:10-50
Expiration Date	12 months from date of receipt.



Immunofluorescence analysis of HepG2 cel...



Immunohistochemical staining of paraffin...