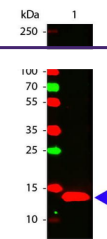

Product Datasheet

IL-22 antibody (orb345155)

Description	IL-22 antibody
Species/Host	Rabbit
Reactivity	Human
Conjugation	Unconjugated
Tested Applications	ELISA, WB
Immunogen	Anti-IL-22 antibody was prepared from rabbit antiserum after repeated immunizations with a truncated form of recombinant human IL-22 protein from E. coli.
Preservatives	0.01% (w/v) Sodium Azide
Form/Appearance	Liquid (sterile filtered)
Concentration	1.0 mg/mL
Storage	Store vial at -20° C prior to opening. Aliquot contents and freeze at -20° C or below for extended storage. Avoid cycles of freezing and thawing. Centrifuge product if not completely clear after standing at room temperature. This product is stable for several weeks at 4° C as an undiluted liquid. Dilute only prior to immediate use.
Note	For research use only
Application notes	IL-22 purified antibody has been tested in western blotting and suitable for ELISA. Specific conditions for reactivity should be optimized by the end user. Expect a band approximately 20 kDa in size corresponding to the human IL-22 protein by western blotting in appropriate cell lysate or extract.
Isotype	IgG
Clonality	Polyclonal
Purity	Anti-IL-22 is an IgG fraction antibody purified from monospecific antiserum by a multi-step process which includes delipidation, salt fractionation and ion exchange chromatography followed by extensive dialysis against the buffer stated above. This antibody is specific for human IL-22 protein. A BLAST analysis was used to suggest cross-reactivity with IL-22 from human sources based on 100% homology with the immunizing sequence. Cross-reactivity with IL-22 from other sources has not been determined.
Uniprot ID	Q9GZX6
NCBI	NP_065386.1
Dilution Range	ELISA: 1:20,000 - 1:50,000, WB: 1:1000-1:2000



Western Blot of Rabbit anti-IL-22 antibo...