

---

## Product Datasheet

### IL-17A antibody (orb345131)

**Description**

IL-17A antibody

**Species/Host**

Rabbit

**Reactivity**

Human

**Conjugation**

Unconjugated

**Tested**

ELISA, IHC, WB

**Applications**
**Immunogen**

IL-17A Antibody was prepared from whole rabbit serum produced by repeated immunizations with full length recombinant human IL17-A protein.

**Preservatives**

0.01% (w/v) Sodium Azide

**Form/Appearance**

Lyophilized

**Concentration**

1.0 mg/mL

**Storage**

Store vial at 4° C prior to restoration. For extended storage aliquot contents and freeze at -20° C or below. Avoid cycles of freezing and thawing. Centrifuge product if not completely clear after standing at room temperature. This product is stable for several weeks at 4° C as an undiluted liquid. Dilute only prior to immediate use.

**Note**

For research use only

**Application notes**

IL-17A antibody has been tested for use in IHC and western blotting and is suitable in ELISA. By western blot a band approximately ~17.5 kDa in size corresponding to human IL17-A protein is expected in the appropriate cell lysate or extract. Specific conditions for reactivity should be optimized by the end user.

**Isotype**

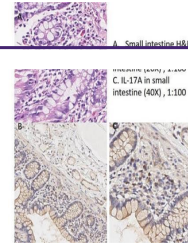
IgG

**Clonality**

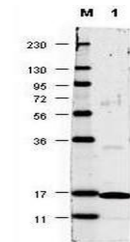
Polyclonal

**Purity**

Anti-IL-17 Antibody was affinity purified from monospecific antiserum by Protein A Purification. In ELISA and other immunoreactive assays, this antibody will recognize both native and recombinant human IL-17A in cell supernatants and certain body fluids. A control of similarly diluted normal rabbit IgG is recommended. Cross-reactivity with IL-17 from other sources has not been determined.

**Uniprot ID**
[Q16552](https://www.uniprot.org/uniprot/Q16552)
**NCBI**
[AAH662531.1](https://www.ncbi.nlm.nih.gov/nuccore/AAH662531.1)


Immunohistochemistry of Rabbit Anti-huma...



Western blot using Biorbyt's anti-Human

...