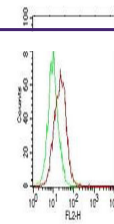
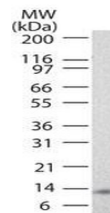

Product Datasheet

IL-17E antibody (orb345113)

Description	IL-17E antibody
Species/Host	Mouse
Reactivity	Human
Conjugation	Unconjugated
Tested Applications	ELISA, FC, WB
Immunogen	Anti-IL-17E (MOUSE) Monoclonal Antibody was produced in mouse by repeated immunizations with mature full length recombinant human IL-17E produced in E.coli followed by hybridoma development.
Preservatives	0.01% (w/v) Sodium Azide
Form/Appearance	Liquid (sterile filtered)
Concentration	1.0mg/mL
Storage	Store vial at -20° C or below prior to opening. This vial contains a relatively low volume of reagent (25 µL). To minimize loss of volume dilute 1:10 by adding 225 µL of the buffer stated above directly to the vial. Recap, mix thoroughly and briefly centrifuge to collect the volume at the bottom of the vial. Use this intermediate dilution when calculating final dilutions as recommended below. Store the vial at -20°C or below after dilution. Avoid cycles of freezing and thawing.
Note	For research use only
Application notes	IL 17E antibody has been tested for use in Flow Cytometry and western blotting. Specific conditions for reactivity should be optimized by the end user.
Isotype	IgG1
Clonality	Monoclonal
Purity	Anti-IL-17E was purified from concentrated tissue culture supernate by Protein G chromatography followed by extensive dialysis against the buffer stated above. This antibody is specific for human IL-17E protein. A BLAST analysis was used to suggest cross-reactivity with IL-17E from human sources based on 100% homology with the immunizing sequence. Cross-reactivity with IL-17E from other sources has not been determined.
Uniprot ID	Q9H293
NCBI	NP_073626.1
Dilution Range	ELISA: 1:10,000 - 1:50,000, FC: 1µg/mL, WB: 0.5µg/mL



Flow Cytometry of Mouse anti-IL-17E anti...



Western Blot of Mouse anti-IL-17E antibo...