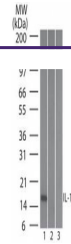


---

## Product Datasheet

### IL-17F antibody (orb345111)

<b>Description</b>	IL-17F antibody
<b>Species/Host</b>	Mouse
<b>Reactivity</b>	Human
<b>Conjugation</b>	Unconjugated
<b>Tested Applications</b>	ELISA, WB
<b>Immunogen</b>	Anti-IL-17F (MOUSE) Monoclonal Antibody was produced in mouse by repeated immunizations with mature full length recombinant human IL-17F produced in E.coli followed by hybridoma development.
<b>Preservatives</b>	0.01% (w/v) Sodium Azide
<b>Form/Appearance</b>	Liquid (sterile filtered)
<b>Concentration</b>	1.0 mg/mL
<b>Storage</b>	Store vial at -20° C or below prior to opening. This vial contains a relatively low volume of reagent (25 µL). To minimize loss of volume dilute 1:10 by adding 225 µL of the buffer stated above directly to the vial. Recap, mix thoroughly and briefly centrifuge to collect the volume at the bottom of the vial. Use this intermediate dilution when calculating final dilutions as recommended below. Store the vial at -20°C or below after dilution. Avoid cycles of freezing and thawing.
<b>Note</b>	For research use only
<b>Application notes</b>	Anti-IL-17F antibody has been tested for use in Western Blot. Specific conditions for reactivity should be optimized by the end user.
<b>Isotype</b>	IgG1
<b>Clonality</b>	Monoclonal
<b>Purity</b>	Anti-IL-17F was purified from concentrated tissue culture supernate by Protein G chromatography followed by extensive dialysis against the buffer stated above. This antibody is specific for human IL-17F protein. A BLAST analysis was used to suggest cross-reactivity with IL-17F from human sources based on 100% homology with the immunizing sequence. Cross-reactivity with IL-17F from other sources has not been determined.
<b>Uniprot ID</b>	<a href="#">Q96PD4</a>
<b>NCBI</b>	<a href="#">NP_443104.1</a>
<b>Dilution Range</b>	ELISA: 1:10,000 - 1:50,000, WB: 0.2µg/mL



Western Blot of Mouse Anti-IL-17F antibo...