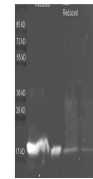
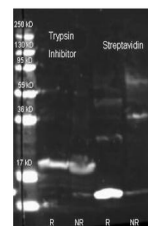

Product Datasheet

Trypsin Inhibitor antibody (Biotin) (orb344980)

Description	Trypsin Inhibitor antibody (Biotin)
Species/Host	Rabbit
Reactivity	Plant
Conjugation	Biotin
Tested Applications	ELISA, WB
Immunogen	Anti-Trypsin Inhibitor was produced by repeated immunizations with soy bean trypsin inhibitor.
Preservatives	0.01% (w/v) Sodium Azide
Form/Appearance	Liquid (sterile filtered)
Concentration	1.0 mg/mL
Storage	Store vial at -20° C or below prior to opening. This vial contains a relatively low volume of reagent (25 µL). To minimize loss of volume dilute 1:10 by adding 225 µL of the buffer stated above directly to the vial. Recap, mix thoroughly and briefly centrifuge to collect the volume at the bottom of the vial. Use this intermediate dilution when calculating final dilutions as recommended below. Store the vial at -20°C or below after dilution. Avoid cycles of freezing and thawing.
Note	For research use only
Application notes	Anti-Trypsin Inhibitor Biotin Conjugated antibody has been tested by ELISA and western blotting. Researchers should determine optimal titers for applications that are not stated below.
Isotype	IgG
Clonality	Polyclonal
Purity	Anti-Trypsin Inhibitor antibody is an IgG fraction purified from monospecific antiserum by a multi-step process which includes delipidation, salt fractionation and ion exchange chromatography followed by extensive dialysis against the buffer stated above. Assay by immunoelectrophoresis resulted in a single precipitin arc against anti-Biotin, anti-Rabbit Serum as well as purified and partially purified Trypsin Inhibitor [Soy Bean]. Cross reactivity against Trypsin Inhibitor from other sources is unknown.
Uniprot ID	P01070
NCBI	P01070.2



Western Blot of Rabbit anti-Soybean Tryp...



Western Blot of Rabbit anti-Soybean Tryp...