

---

## Product Datasheet

### Trypsin Inhibitor antibody (Biotin) (orb344979)

**Description**

Trypsin Inhibitor antibody (Biotin)

**Species/Host**

Rabbit

**Reactivity**

Plant

**Conjugation**

Biotin

**Tested**

ELISA, WB

**Applications**
**Immunogen**

Anti-Trypsin Inhibitor was produced by repeated immunizations with soy bean trypsin inhibitor.

**Preservatives**

0.01% (w/v) Sodium Azide

**Form/Appearance**

Lyophilized

**Concentration**

1.0 mg/mL

**Storage**

Store vial at 4° C prior to restoration. For extended storage aliquot contents and freeze at -20° C or below. Avoid cycles of freezing and thawing. Centrifuge product if not completely clear after standing at room temperature. This product is stable for several weeks at 4° C as an undiluted liquid. Dilute only prior to immediate use.

**Note**

For research use only

**Application notes**

Anti-Trypsin Inhibitor Biotin Conjugated antibody has been tested by ELISA and western blotting. Researchers should determine optimal titers for applications that are not stated below.

**Isotype**

IgG

**Clonality**

Polyclonal

**Purity**

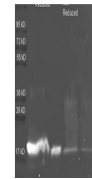
Anti-Trypsin Inhibitor antibody is an IgG fraction purified from monospecific antiserum by a multi-step process which includes delipidation, salt fractionation and ion exchange chromatography followed by extensive dialysis against the buffer stated above. Assay by immunoelectrophoresis resulted in a single precipitin arc against anti-Biotin, anti-Rabbit Serum as well as purified and partially purified Trypsin Inhibitor [Soy Bean]. Cross reactivity against Trypsin Inhibitor from other sources is unknown.

**Uniprot ID**
**P01070**
**NCBI**
**P01070.2**
**Dilution Range**

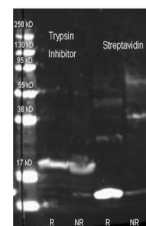
ELISA: 1:1,000 - 1:5,000, WB: 1:500 - 1:2,500

**Expiration Date**

12 months from date of receipt



Western Blot of Rabbit anti-Soybean Tryp...



Western Blot of Rabbit anti-Soybean Tryp...