
Product Datasheet

Penicillinase antibody (Biotin) (orb344978)

Description

Penicillinase antibody (Biotin)

Species/Host

Rabbit

Reactivity

Bacteria

Conjugation

Biotin

Tested

DOT, IP, WB

Applications
Immunogen

Penicillinase [Enterobacter cloacae]

Preservatives

0.01% (w/v) Sodium Azide

Form/Appearance

Liquid (sterile filtered)

Concentration

1.0 mg/mL

Storage

Store vial at -20° C or below prior to opening. This vial contains a relatively low volume of reagent (25 µL). To minimize loss of volume dilute 1:10 by adding 225 µL of the buffer stated above directly to the vial. Recap, mix thoroughly and briefly centrifuge to collect the volume at the bottom of the vial. Use this intermediate dilution when calculating final dilutions as recommended below. Store the vial at -20°C or below after dilution. Avoid cycles of freezing and thawing.

Note

For research use only

Application notes

Anti-Penicillinase Biotin Conjugated antibody has been tested by dot blot and is suitable to be assayed against 1.0 ug of Penicillinase in a standard capture ELISA using Peroxidase Conjugated Streptavidin #S000-03 and ABTS (2,2'-azino-bis-[3-ethylbenthiiazoline-6-sulfonic acid]) code # ABTS-100 as a substrate for 30 minutes at room temperature. A working dilution of 1:4,000 to 1:20,000 of the reconstitution concentration is suggested for this product.

Isotype

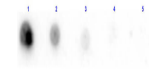
IgG

Clonality

Polyclonal

Purity

Anti-Penicillinase antibody is an IgG fraction antibody purified from monospecific antiserum by a multi-step process which includes delipidation, salt fractionation and ion exchange chromatography followed by extensive dialysis against the buffer stated above. Assay by immunoelectrophoresis resulted in a single precipitin arc against anti-Biotin, anti-Rabbit Serum as well as purified and partially purified Penicillinase [Enterobacter cloacae]. Cross reactivity against Penicillinase from other sources is unknown.



Dot Blot results of Rabbit Anti-Penicill...