
Product Datasheet

Enol Pyruvate Carboxylase antibody (orb344820)

Description

Enol Pyruvate Carboxylase antibody

Species/Host

Rabbit

Reactivity

Plant

Conjugation

Unconjugated

Tested

ELISA, IHC, WB

Applications
Immunogen

Anti-Phospho Enol Pyruvate Carboxylase Antibody was produced by repeated immunizations with maize leaves Phospho-enol-pyruvate Carboxylase.

Preservatives

0.01% (w/v) Sodium Azide

Form/Appearance

Lyophilized

Concentration

1.0 mg/ml

Storage

Store vial at 4° C prior to restoration. For extended storage aliquot contents and freeze at -20° C or below. Avoid cycles of freezing and thawing. Centrifuge product if not completely clear after standing at room temperature. This product is stable for several weeks at 4° C as an undiluted liquid. Dilute only prior to immediate use.

Note

For research use only

Application notes

Anti-Phospho Enol Pyruvate Carboxylase antibody has been tested by western blotting and ELISA is suitable for IHC. Researchers should determine optimal titers for applications that are not stated below.

Isotype

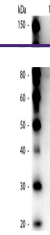
IgG

Clonality

Polyclonal

Purity

Anti-Phospho Enol Pyruvate Carboxylase is an IgG fraction antibody purified from monospecific antiserum by a multi-step process which includes delipidation, salt fractionation and ion exchange chromatography followed by extensive dialysis against the buffer stated above. Assay by immunoelectrophoresis resulted in a single precipitin arc against anti-Rabbit Serum as well as purified and partially purified Phospho-enol-Pyruvate Carboxylase [Maize]. Cross reactivity against Phospho-enol-Pyruvate Carboxylase from other tissues and species may occur but have not been specifically determined.

Uniprot ID
[B8XPZ2](#)
NCBI
[ACN80021.1](#)


Western Blot of Rabbit Anti-Phospho Enol...