
Product Datasheet

Beta galactosidase antibody (FITC) (orb344713)

Description

Beta galactosidase antibody (FITC)

Species/Host

Rabbit

Conjugation

FITC

Tested Applications

DOT, IF, WB

Immunogen

Beta Galactosidase (E. coli)

Preservatives

0.01% (w/v) Sodium Azide

Form/Appearance

Liquid (sterile filtered)

Concentration

1.0 mg/mL

Storage

Store vial at -20° C or below prior to opening. This vial contains a relatively low volume of reagent (25 µL). To minimize loss of volume dilute 1:10 by adding 225 µL of the buffer stated above directly to the vial. Recap, mix thoroughly and briefly centrifuge to collect the volume at the bottom of the vial. Use this intermediate dilution when calculating final dilutions as recommended below. Store the vial at -20°C or below after dilution. Avoid cycles of freezing and thawing.

Note

For research use only

Application notes

Anti-Beta Galactosidase Fluorescein Conjugated Antibody has been tested by dot blot and western blot and is designed for fluorescent western blotting and immunofluorescence. This product is also suitable for multiplex analysis, including multicolor imaging, utilizing various commercial platforms.

Isotype

IgG

Clonality

Polyclonal

Purity

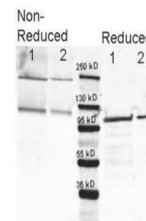
Anti-Beta Galactosidase is an IgG fraction antibody purified from monospecific antiserum by a multi-step process which includes delipidation, salt fractionation and ion exchange chromatography followed by extensive dialysis against the buffer stated above. Assay by immunoelectrophoresis resulted in a single precipitin arc against anti-fluorescein, anti-Rabbit Serum and purified and partially purified Beta Galactosidase (E. coli).

Uniprot ID
[P00722](#)
NCBI
[NP_414878.1](#)
Dilution Range

IF: User Optimized, WB: User Optimized



Western blot using Biorbyt's anti-b-Gala...



Western blotting using Biorbyt's anti-b...



Western blotting using Biorbyt's Fluores...