
Product Datasheet

PARP1 antibody (orb344711)

Description

PARP1 antibody

Species/Host

Rabbit

Reactivity

Human

Conjugation

Unconjugated

Tested Applications

2D-PAGE, WB

Immunogen

PARP1 (internal) purified antibody was prepared from whole rabbit serum produced by repeated immunizations with c-terminus region of human PARP1 autocatalytic domain recombinant protein.

Preservatives

0.01% (w/v) Sodium Azide

Form/Appearance

Liquid (sterile filtered)

Concentration

1.0 mg/mL

Storage

Store vial at -20° C prior to opening. Aliquot contents and freeze at -20° C or below for extended storage. Avoid cycles of freezing and thawing. Centrifuge product if not completely clear after standing at room temperature. This product is stable for several weeks at 4° C as an undiluted liquid. Dilute only prior to immediate use.

Note

For research use only

Application notes

Anti-PARP1 (internal) antibody has been tested by western blotting and nanoimmunoassay (NIA). Specific conditions for reactivity should be optimized by the end user. Expect a band approximately 113 kDa in size corresponding to PARP-1 by western blotting in the appropriate cell lysate or extract.

Isotype

IgG

Clonality

Polyclonal

Purity

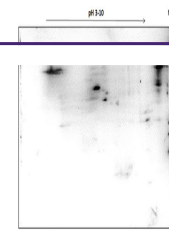
PARP1 (internal) was purified from monospecific antiserum by immunoaffinity chromatography using protein A coupled to agarose beads. This antibody is specific for human PARP1 protein. No cross reactivity detected towards other PARP members when using siRNAs against 18 PARP family members. Cross-reactivity with PARP1 from other sources has not been determined.

Uniprot ID
P09874
Dilution Range

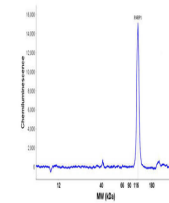
WB: 1:1000

Expiration Date

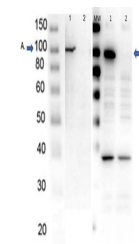
12 months from date of receipt.



OVCAR-8 Wild Type Lysate separated on 2D...



Peggy Sue™ Size Separation Electropher...



Western Blot of endogenous PARP1 with Ra...