

---

## Product Datasheet

### CCL3L1 antibody (orb344657)

**Description**

CCL3L1 antibody

**Species/Host**

Rabbit

**Reactivity**

Bovine, Porcine

**Conjugation**

Unconjugated

**Tested**

ELISA, WB

**Applications**
**Immunogen**

This protein-A purified antibody was prepared from whole rabbit serum produced by repeated immunizations with a recombinant protein raised in yeast, corresponding to the 70 amino acids of the mature swine CCL3L1 protein.

**Preservatives**

0.01% (w/v) Sodium Azide

**Form/Appearance**

Liquid (sterile filtered)

**Concentration**

1.0 mg/mL

**Storage**

Store vial at -20° C or below prior to opening. This vial contains a relatively low volume of reagent (25 µL). To minimize loss of volume dilute 1:10 by adding 225 µL of the buffer stated above directly to the vial. Recap, mix thoroughly and briefly centrifuge to collect the volume at the bottom of the vial. Use this intermediate dilution when calculating final dilutions as recommended below. Store the vial at -20°C or below after dilution. Avoid cycles of freezing and thawing.

**Note**

For research use only

**Application notes**

This protein-A purified antibody has been tested for use in ELISA and western blotting. Specific conditions for reactivity should be optimized by the end user. Expect a band approximately 7.8 kDa in size corresponding to swine CCL3L1 protein by western blotting in the appropriate cell lysate or extract.

**Isotype**

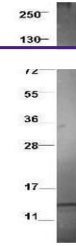
IgG

**Clonality**

Polyclonal

**Purity**

This product was Protein-A purified from monospecific antiserum by chromatography. This antibody is specific for swine CCL3L1 protein. A BLAST analysis was used to suggest cross-reactivity with CCL3L1 from bovine sources based on 100% homology with the immunizing sequence. Partial reactivity is expected against CCL3L1 from cat, dog, human, chimpanzee, baboon, bovine, and rat based on greater than 90% sequence homology. Cross-reactivity with CCL3L1 from other sources has not been determined.

**Uniprot ID**
[A1YM34](https://www.uniprot.org/uniprot/A1YM34)


Western blot using Biorbyt's protein-A p...