
Product Datasheet

CCL3L1 antibody (orb344656)

Description

CCL3L1 antibody

Species/Host

Rabbit

Reactivity

Bovine, Porcine

Conjugation

Unconjugated

Tested

ELISA, WB

Applications
Immunogen

This protein-A purified antibody was prepared from whole rabbit serum produced by repeated immunizations with a recombinant protein raised in yeast, corresponding to the 70 amino acids of the mature swine CCL3L1 protein.

Preservatives

0.01% (w/v) Sodium Azide

Form/Appearance

Lyophilized

Concentration

1.0 mg/mL

Storage

Store vial at 4° C prior to restoration. For extended storage aliquot contents and freeze at -20° C or below. Avoid cycles of freezing and thawing. Centrifuge product if not completely clear after standing at room temperature. This product is stable for several weeks at 4° C as an undiluted liquid. Dilute only prior to immediate use.

Note

For research use only

Application notes

This protein-A purified antibody has been tested for use in ELISA and western blotting. Specific conditions for reactivity should be optimized by the end user. Expect a band approximately 7.8 kDa in size corresponding to swine CCL3L1 protein by western blotting in the appropriate cell lysate or extract.

Isotype

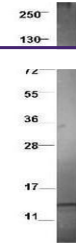
IgG

Clonality

Polyclonal

Purity

This product was Protein-A purified from monospecific antiserum by chromatography. This antibody is specific for swine CCL3L1 protein. A BLAST analysis was used to suggest cross-reactivity with CCL3L1 from bovine sources based on 100% homology with the immunizing sequence. Partial reactivity is expected against CCL3L1 from cat, dog, human, chimpanzee, baboon, bovine, and rat based on greater than 90% sequence homology. Cross-reactivity with CCL3L1 from other sources has not been determined.

Uniprot ID
[A1YM34](#)
NCBI
[57527998](#)


Western blot using Biorbyt's protein-A p...