
Product Datasheet

MCP1 antibody (orb344655)

Description

MCP1 antibody

Species/Host

Rabbit

Reactivity

Bovine

Conjugation

Unconjugated

Tested

ELISA, WB

Applications
Immunogen

This protein-A purified antibody was prepared from whole rabbit serum produced by repeated immunizations with a recombinant protein raised in yeast, corresponding to the 76 amino acids of the mature bovine CCL2 protein.

Preservatives

0.01% (w/v) Sodium Azide

Form/Appearance

Liquid (sterile filtered)

Concentration

1.0 mg/mL

Storage

Store vial at -20° C or below prior to opening. This vial contains a relatively low volume of reagent (25 µL). To minimize loss of volume dilute 1:10 by adding 225 µL of the buffer stated above directly to the vial. Recap, mix thoroughly and briefly centrifuge to collect the volume at the bottom of the vial. Use this intermediate dilution when calculating final dilutions as recommended below. Store the vial at -20°C or below after dilution. Avoid cycles of freezing and thawing.

Note

For research use only

Application notes

This protein-A purified antibody has been tested for use in ELISA and western blotting. Specific conditions for reactivity should be optimized by the end user. Expect a band approximately 8.8 kDa in size corresponding to bovine CCL2 protein by western blotting in the appropriate cell lysate or extract.

Isotype

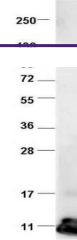
IgG

Clonality

Polyclonal

Purity

This product was Protein-A purified from monospecific antiserum by chromatography. This antibody is specific for bovine CCL2 protein. A BLAST analysis was used to suggest cross-reactivity with CCL2 from bovine sources based on 100% homology with the immunizing sequence. Partial reactivity is expected against *Sus scrofa* 85.5% and *Bos Taurus* 81.1%. Cross-reactivity with CCL2 from other sources has not been determined.

Uniprot ID
[A5PJF7](#)


Western blot using Biorbyt's protein-A p...