

---

## Product Datasheet

### IL21 antibody (orb344650)

**Description**

IL21 antibody

**Species/Host**

Rabbit

**Reactivity**

Bovine, Equine, Porcine

**Conjugation**

Unconjugated

**Tested**

ELISA, WB

**Applications**
**Immunogen**

This protein-A purified antibody was prepared from whole rabbit serum produced by repeated immunizations with a recombinant protein raised in yeast, corresponding to amino acid residues 24-152 of bovine IL-21 protein.

**Preservatives**

0.01% (w/v) Sodium Azide

**Form/Appearance**

Lyophilized

**Concentration**

1.0 mg/mL

**Storage**

Store vial at 4° C prior to restoration. For extended storage aliquot contents and freeze at -20° C or below. Avoid cycles of freezing and thawing. Centrifuge product if not completely clear after standing at room temperature. This product is stable for several weeks at 4° C as an undiluted liquid. Dilute only prior to immediate use.

**Note**

For research use only

**Application notes**

IL-21 is expressed in activated CD4-positive T-cells but not in CD8-positive T-cells, B-cells, or monocytes, and in HL-60 and THP-1 cell lines. This protein-A purified antibody has been tested for use in ELISA and western blotting. Specific conditions for reactivity should be optimized by the end user. Expect a band approximately 15.1 kDa in size corresponding to bovine IL-21 protein by western blotting in the appropriate cell lysate or extract.

**Isotype**

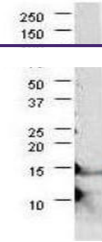
IgG

**Clonality**

Polyclonal

**Purity**

This product was Protein-A purified from monospecific antiserum by chromatography. This antibody is specific for bovine IL-21 protein. A BLAST analysis was used to suggest cross-reactivity with IL-21 from bovine sources based on 100% homology with the immunizing sequence. Based on 92% homology, there is a chance of cross-reactivity to porcine IL- 21, 91% to horse IL-21, 89% to human and dog, 88% to macaque, 84% to platypus and Syrian hamster, 76-79% to mouse, 75% to rat, and 48% to chicken. Cross-reactivity with IL-21 from other sources has not been determined.



Western blot using Biorbyt's anti-bovine...