

Product Datasheet

CENP-Q antibody (orb344649)

Description

CENP-Q antibody

Species/Host

Rabbit

Reactivity

Human

Conjugation

Unconjugated

Tested Applications

ELISA, IF, Multiplex Assay, WB

Immunogen

This protein A purified antibody was prepared from whole rabbit serum produced by repeated immunizations with full-length human CENP-Q recombinant protein.

Preservatives

0.01% (w/v) Sodium Azide

Form/Appearance

Liquid (sterile filtered)

Concentration

1.15 mg/mL

Storage

Store vial at -20° C or below prior to opening. This vial contains a relatively low volume of reagent (25 µL). To minimize loss of volume dilute 1:10 by adding 225 µL of the buffer stated above directly to the vial. Recap, mix thoroughly and briefly centrifuge to collect the volume at the bottom of the vial. Use this intermediate dilution when calculating final dilutions as recommended below. Store the vial at -20°C or below after dilution. Avoid cycles of freezing and thawing.

Note

For research use only

Application notes

This protein A purified antibody has been tested for use in ELISA, immunofluorescence microscopy and western blotting. Specific conditions for reactivity should be optimized by the end user. Expect a band approximately 26-31 kDa in size corresponding to human CENP-Q by western blotting in the appropriate cell lysate or extract.

Isotype

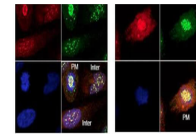
IgG

Clonality

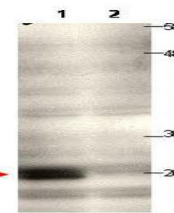
Polyclonal

Purity

This product was protein A purified from monospecific antiserum by immunoaffinity chromatography using protein A coupled to agarose beads. This antibody is specific for human CENP-Q protein. A BLAST analysis of the full length sequence was used to suggest partial cross-reactivity with CENP-Q based on the following percentage homologies: macaque (91%), horse (76%), bovine (74%), dog (73%), swine (71%), mouse (65%) and rat (60%). Cross-reactivity with



Immunofluorescence microscopy using Bior...



Western blot using Biorbyt's protein A p...