
Product Datasheet

Glypican-1 antibody (orb344646)

Description

Glypican-1 antibody

Species/Host

Rabbit

Reactivity

Human, Mouse, Rat

Conjugation

Unconjugated

Tested Applications

ELISA, IHC, WB

Immunogen

Anti-Glypican-1 protein A purified antibody was prepared from whole rabbit serum produced by repeated immunizations with a synthetic peptide corresponding to an internal region of human glypican-1 protein.

Preservatives

0.01% (w/v) Sodium Azide

Form/Appearance

Liquid (sterile filtered)

Concentration

2.0 mg/mL

Storage

Store vial at -20° C prior to opening. Aliquot contents and freeze at -20° C or below for extended storage. Avoid cycles of freezing and thawing. Centrifuge product if not completely clear after standing at room temperature. This product is stable for several weeks at 4° C as an undiluted liquid. Dilute only prior to immediate use.

Note

For research use only

Application notes

Anti-Glypican-1 antibody has been tested for use in ELISA, immunohistochemistry, and western blotting. Specific conditions for reactivity should be optimized by the end user. Expect a band approximately ~61 kDa in size corresponding to glypican by western blotting in the appropriate cell lysate or extract. The higher molecular weight (110kDa) of transfected Fc-glypican compared with the expected MW of glypican is likely due to the presence of the Fc-tag.

Isotype

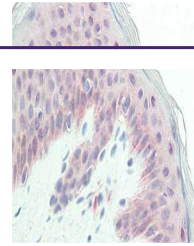
IgG

Clonality

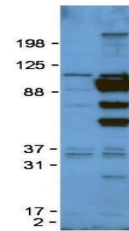
Polyclonal

Purity

Anti-Glypican-1 was protein A purified from monospecific antiserum by immunoaffinity chromatography using protein A coupled to agarose beads. This antibody is specific for human glypican-1 protein. A BLAST analysis was used to suggest partial cross-reactivity with glypican from rat, mouse, Macaque, dog, cattle, and opossum sources based on 100 - 88% homology with the immunizing



Immunohistochemistry of Rabbit anti-Glyp...



Western Blot of Rabbit anti-Glypican-1 a...