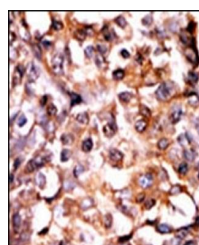
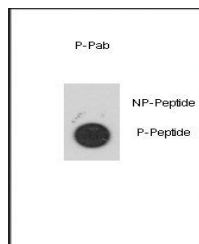


Product Datasheet

MAPKAPK2 (phospho-Ser272) antibody (orb34464)

Description	Rabbit polyclonal to MAPKAPK2 (phospho-Ser272)
Species/Host	Rabbit
Reactivity	Human
Conjugation	Unconjugated
Tested Applications	DOT, IHC-P
Immunogen	Synthetic Peptide
Target	MAPKAPK2
Form/Appearance	Purified polyclonal antibody supplied in PBS with 0.09% (W/V) sodium azide. This antibody is purified through a protein A column, followed by peptide affinity purification.
Storage	Maintain refrigerated at 2-8°C for up to 2 weeks. For long term storage store at -20°C in small aliquots to prevent freeze-thaw cycles
Note	For research use only
Isotype	Rabbit IgG
Clonality	Polyclonal
MW	45568
Uniprot ID	P49137
NCBI	NP_116584.2 , NP_004750.1
Dilution Range	DOT: 1:500, IHC-P: 1:50-100
Expiration Date	12 months from date of receipt.



Immunohistochemical staining of paraffin...