

Product Datasheet

Selenophosphate Synthetase 2 antibody (orb344638)

Description

Selenophosphate Synthetase 2 antibody

Species/Host

Rabbit

Reactivity

Mouse

Conjugation

Unconjugated

Tested

ELISA, IP, WB

Applications
Immunogen

This Protein A purified antibody was prepared from whole rabbit serum produced by repeated immunizations with a full-length recombinant protein corresponding to mouse SPS2.

Preservatives

0.01% (w/v) Sodium Azide

Form/Appearance

Liquid (sterile filtered)

Concentration

2.3 mg/mL

Storage

Store vial at -20° C prior to opening. Aliquot contents and freeze at -20° C or below for extended storage. Avoid cycles of freezing and thawing. Centrifuge product if not completely clear after standing at room temperature. This product is stable for several weeks at 4° C as an undiluted liquid. Dilute only prior to immediate use.

Note

For research use only

Application notes

This Protein A purified antibody has been tested for use in ELISA and western blotting. Specific conditions for reactivity should be optimized by the end user. Expect a band approximately 48 kDa in size corresponding to SPS2 by western blotting in the appropriate cell lysate or extract.

Isotype

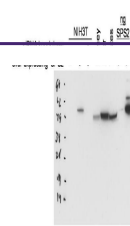
IgG

Clonality

Polyclonal

Purity

This product was purified by Protein A chromatography from monospecific antiserum. This antibody reacts with mouse SPS2 and shows partial cross-reactivity with SPS1. A BLAST analysis was used to suggest cross-reactivity with SPS2 from human sources based on an 84% homology with the immunizing sequence. Cross-reactivity with SPS2 from other sources has not been determined.

Uniprot ID
[P97364](#)
NCBI
[14717785](#)


Western blot using Biorbyt's Protein A p...