

---

## Product Datasheet

### Streptavidin antibody (orb344583)

**Description**

Streptavidin antibody

**Species/Host**

Rabbit

**Reactivity**

Bacteria

**Conjugation**

Unconjugated

**Tested Applications**

DOT, ELISA, IHC, WB

**Immunogen**

Streptavidin [Streptomyces avidinii]

**Preservatives**

0.01% (w/v) Sodium Azide

**Form/Appearance**

Liquid (sterile filtered)

**Concentration**

1.0 mg/mL

**Storage**

Store vial at -20° C or below prior to opening. This vial contains a relatively low volume of reagent (25 µL). To minimize loss of volume dilute 1:10 by adding 225 µL of the buffer stated above directly to the vial. Recap, mix thoroughly and briefly centrifuge to collect the volume at the bottom of the vial. Use this intermediate dilution when calculating final dilutions as recommended below. Store the vial at -20°C or below after dilution. Avoid cycles of freezing and thawing.

**Note**

For research use only

**Application notes**

Anti-Streptavidin antibody has been tested by ELISA, SDS-Page, and dot blot and is suitable for western blot, and immunohistochemistry, as well as other assays requiring lot-to-lot consistency.

**Isotype**

IgG

**Clonality**

Polyclonal

**Purity**

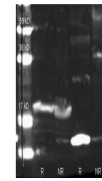
Anti-Streptavidin antibody is an IgG fraction antibody purified from monospecific antiserum by a multi-step process which includes delipidation, salt fractionation and ion exchange chromatography followed by extensive dialysis against the buffer stated above. Assay by immunoelectrophoresis resulted in a single precipitin arc against anti-Rabbit Serum as well as purified and partially purified Streptavidin [Streptomyces avidinii]. No cross reactivity occurs against Avidin.

**Dilution Range**

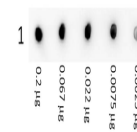
ELISA: 1:200,000, IHC: 1:1,500 - 1:5,000, WB: 1:3,000 - 1:12,000

**Expiration Date**

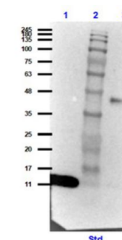
12 months from date of receipt.



Biorbyt Rabbit anti Streptavidin and Bio...



Dot Blot showing the detection of Strept...



Western Blot of Rabbit Anti-Streptavidin...