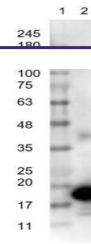

Product Datasheet

Trypsin Inhibitor antibody (orb344577)

Description	Trypsin Inhibitor antibody
Species/Host	Rabbit
Reactivity	Plant
Conjugation	Unconjugated
Tested Applications	ELISA, IP, WB
Immunogen	Trypsin Inhibitor [Soybean]
Preservatives	0.01% (w/v) Sodium Azide
Form/Appearance	Liquid (sterile filtered)
Concentration	1.0 mg/mL
Storage	Store vial at -20° C or below prior to opening. This vial contains a relatively low volume of reagent (25 µL). To minimize loss of volume dilute 1:10 by adding 225 µL of the buffer stated above directly to the vial. Recap, mix thoroughly and briefly centrifuge to collect the volume at the bottom of the vial. Use this intermediate dilution when calculating final dilutions as recommended below. Store the vial at -20°C or below after dilution. Avoid cycles of freezing and thawing.
Note	For research use only
Application notes	Soybean trypsin inhibitor antibody has been tested by ELISA and western blot and is assayed against 1.0 ug of Trypsin Inhibitor [Soybean] in a standard ELISA using Peroxidase conjugated Affinity Purified anti-Rabbit IgG #611-1302 and (ABTS (2,2'-azino-bis-[3-ethylbenthiiazoline-6-sulfonic acid]) as a substrate for 30 minutes at room temperature. A working dilution of 1:3,000 to 1:12,000 of the reconstitution concentration is suggested for this product.
Isotype	IgG
Clonality	Polyclonal
Purity	Anti-trypsin inhibitor antibody is an IgG fraction antibody purified from monospecific antiserum by a multi-step process which includes delipidation, salt fractionation and ion exchange chromatography followed by extensive dialysis against the buffer stated above. Assay by immunoelectrophoresis resulted in a single precipitin arc against anti-Rabbit Serum as well as purified and partially purified Trypsin Inhibitor [Soybean]. Cross reactivity against Trypsin Inhibitor from other sources may occur but have not been specifically determined.



Western Blot of Rabbit Anti-Trypsin Inhi...