

---

## Product Datasheet

### 6X His Tag antibody (Biotin) (orb344543)

**Description**

6X His Tag antibody (Biotin)

**Species/Host**

Mouse

**Conjugation**

Biotin

**Tested Applications**

ELISA, IHC, WB

**Immunogen**

This antibody was produced in mice by repeated immunizations with 6X His epitope tag peptide H-H-H-H-H-H conjugated to KLH using maleimide.

**Preservatives**

0.01% (w/v) Sodium Azide

**Form/Appearance**

Lyophilized

**Concentration**

1.0 mg/mL

**Storage**

Store vial at 4° C prior to restoration. For extended storage aliquot contents and freeze at -20° C or below. Avoid cycles of freezing and thawing. Centrifuge product if not completely clear after standing at room temperature. This product is stable for several weeks at 4° C as an undiluted liquid. Dilute only prior to immediate use.

**Note**

For research use only

**Application notes**

Anti-6X His is optimally suited for monitoring expression of His-tagged fusion proteins. As such, anti-6X His/6X His can be used to identify fusion proteins containing the 6X His epitope. The antibody recognizes the His tag fused either to the amino- or carboxy- termini of targeted proteins. This antibody has been tested by ELISA and western blotting against both the immunizing peptide and His-containing recombinant proteins. Although not tested, this antibody is likely functional for immunoprecipitation and immunocytochemistry.

**Isotype**

IgG1

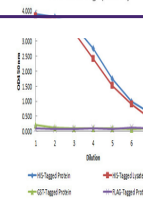
**Clonality**

Monoclonal

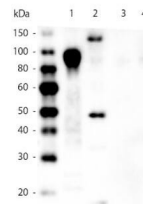
**Purity**

Anti-6X HIS Epitope Tag was purified from concentrated tissue culture supernate by Protein A chromatography and is directed against the 6X His motif and is useful in determining its presence in various assays. This monoclonal anti-6X His tag antibody detects over-expressed proteins containing the 6X His epitope tag. To date, this antibody has reacted with all His tagged proteins so far tested. In western blotting of bacterial extracts, the antibody does not cross-react with endogenous proteins. The antibody recognizes the His-tag (His-His-His-His-His-His) fused to either the amino-

Anti-6xHIS Tag Specificity



ELISA of Mouse anti-6xHIS Tag Antibody. ...



Western Blot of Mouse anti-6xHIS Tag Ant...