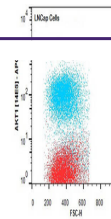
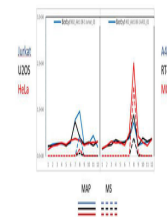

Product Datasheet

AKT1 antibody (orb344525)

Description	AKT1 antibody
Species/Host	Mouse
Reactivity	Human, Mouse
Conjugation	Unconjugated
Tested Applications	ELISA, FC, IHC, WB
Immunogen	Anti-AKT1 Antibody was produced by repeated immunizations with a synthetic peptide corresponding to internal residues of human AKT1 protein.
Preservatives	0.01% (w/v) Sodium Azide
Form/Appearance	Liquid (sterile filtered)
Concentration	1.0 mg/ml
Storage	Store vial at -20° C or below prior to opening. This vial contains a relatively low volume of reagent (25 µL). To minimize loss of volume dilute 1:10 by adding 225 µL of the buffer stated above directly to the vial. Recap, mix thoroughly and briefly centrifuge to collect the volume at the bottom of the vial. Use this intermediate dilution when calculating final dilutions as recommended below. Store the vial at -20°C or below after dilution. Avoid cycles of freezing and thawing.
Note	For research use only
Application notes	Anti-AKT1 Antibody has been tested in ELISA, SDS-Page, flow cytometry, and western blotting. This antibody is suitable for immunoprecipitation and immunohistochemistry. Expect a band approximately 56 kDa in size corresponding to AKT1 protein by western blotting in the appropriate cell lysate or extract. This monoclonal antibody reacts with human AKT. Specific conditions for reactivity should be optimized by the end user. For immunohistochemistry we recommend the use of fresh frozen tissues. Attempts at staining paraffin-embedded formalin fixed tissues were negative. No pre-treatment of sample is required.
Isotype	IgG2a
Clonality	Monoclonal
Purity	Anti-AKT1 antibody is directed against human AKT1. The antibody detects both unphosphorylated and phosphorylated forms of the protein. Anti-AKT1 antibody was purified from ascites by Protein A chromatography. Cross reactivity with AKT1 from other species has not been determined, however, the sequence of the immunogen



Flow Cytometry of Mouse anti-AKT1 antibo...



PAGE-MAP (microsphere affinity proteomic...

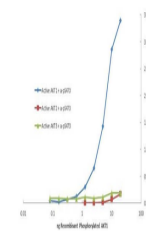


Plate was coated with monoclonal anti AK...