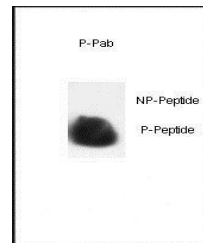
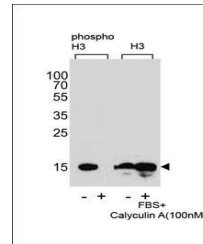


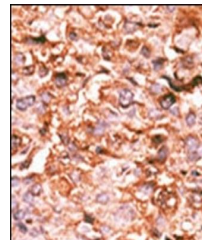
## Product Datasheet

### HIST1H3B3 (phospho-Ser10) antibody (orb34452)

<b>Description</b>	Rabbit polyclonal to HIST1H3B3 (phospho-Ser10)
<b>Species/Host</b>	Rabbit
<b>Reactivity</b>	Human
<b>Conjugation</b>	Unconjugated
<b>Tested Applications</b>	DOT, IF, IHC-P, WB
<b>Immunogen</b>	Synthetic Peptide
<b>Target</b>	H3C1
<b>Form/Appearance</b>	Purified polyclonal antibody supplied in PBS with 0.09% (W/V) sodium azide. This antibody is purified through a protein A column, followed by peptide affinity purification.
<b>Storage</b>	Maintain refrigerated at 2-8°C for up to 2 weeks. For long term storage store at -20°C in small aliquots to prevent freeze-thaw cycles
<b>Note</b>	For research use only
<b>Isotype</b>	Rabbit IgG
<b>Clonality</b>	Polyclonal
<b>MW</b>	15404
<b>Uniprot ID</b>	<a href="#">P68431</a>
<b>NCBI</b>	<a href="#">NP_003520.1</a> , <a href="#">NP_003524.1</a> , <a href="#">NP_003521.2</a> , <a href="#">NP_003526.1</a> , <a href="#">NP_066298.1</a> , <a href="#">NP_003523.1</a> , <a href="#">NP_003522.1</a> , <a href="#">NP_003528.1</a> , <a href="#">NP_003525.1</a> , <a href="#">NP_003527.1</a>
<b>Dilution Range</b>	WB: 1:2000, DOT: 1:500, IHC-P: 1:50-100
<b>Expiration Date</b>	12 months from date of receipt.



Dot blot analysis of nitrocellulose memb...



Immunohistochemical staining of paraffin...