

---

## Product Datasheet

### BrdU antibody (orb344495)

**Description**

BrdU antibody

**Species/Host**

Mouse

**Reactivity**

Other

**Conjugation**

Unconjugated

**Tested**

DOT, ELISA, FC, IF, IHC, WB

**Applications**
**Immunogen**

Anti-BrdU monoclonal antibody was produced in mice by repeated immunizations prepared via immunizations with BromodeoxyUridine-KLH followed by hybridoma development.

**Preservatives**

0.01% (w/v) Sodium Azide

**Form/Appearance**

Liquid (sterile filtered)

**Concentration**

1.0 mg/ml

**Storage**

Store BrdU Antibody at -20° C prior to opening. Aliquot contents and freeze at -20° C or below for extended storage. Avoid cycles of freezing and thawing. Centrifuge product if not completely clear after standing at room temperature. This product is stable for several weeks at 4° C as an undiluted liquid. Dilute only prior to immediate use.

**Note**

For research use only

**Application notes**

Anti-BrdU Antibody has been tested as suitable for immunofluorescence and immunoblot assays. Antibody may be suitable for additional immunoassays including flow cytometry and immunohistochemistry. Specific conditions for reactivity should be optimized by the end user. Antibody will detect incorporated BrdU thymidine analog from replicated cells.

**Isotype**

IgG

**Clonality**

Monoclonal

**Purity**

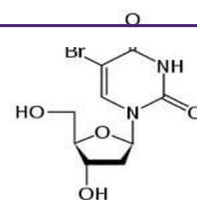
Anti-BrdU Monoclonal Antibody was purified from ascites fluid by Protein A chromatography. This antibody reacts strongly with BrdU. Cross-reactivity is observed with CldU and IdU.

**Dilution Range**

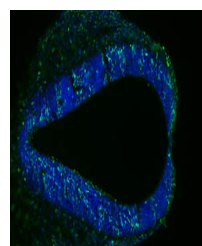
ELISA: 1:2000 - 1:10000, FC: 1:50-1:100, IHC: 1:100-1:500, IF: 1:500-1:3000, WB: 1:2000 - 1:5000

**Expiration Date**

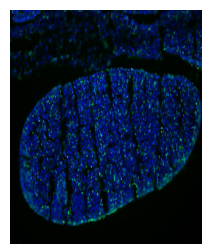
12 months from date of receipt.



Bromodeoxyuridine (BrdU) chemical struct...



Immunofluorescence Microscopy of Mouse A...



Immunofluorescence Microscopy of Mouse A...