

---

## Product Datasheet

### **BIN1 antibody (orb344474)**

**Description**

BIN1 antibody

**Species/Host**

Mouse

**Reactivity**

Human, Mouse

**Conjugation**

Unconjugated

**Tested**

ELISA, IF, IP, WB

**Applications**
**Immunogen**

Anti-BIN1 (MOUSE) Monoclonal Antibody was produced in mouse by repeated immunizations with BIN1 polypeptide followed by hybridoma development.

**Preservatives**

0.01% (w/v) Sodium Azide

**Form/Appearance**

Liquid (sterile filtered)

**Concentration**

1 mg/ml

**Storage**

Store vial at -20° C or below prior to opening. This vial contains a relatively low volume of reagent (25 µL). To minimize loss of volume dilute 1:10 by adding 225 µL of the buffer stated above directly to the vial. Recap, mix thoroughly and briefly centrifuge to collect the volume at the bottom of the vial. Use this intermediate dilution when calculating final dilutions as recommended below. Store the vial at -20°C or below after dilution. Avoid cycles of freezing and thawing.

**Note**

For research use only

**Application notes**

Anti-BIN1 antibody has been tested for use in ELISA, Western Blot, IP, and IF. Specific conditions for reactivity should be optimized by the end user.

**Isotype**

IgG

**Clonality**

Monoclonal

**Purity**

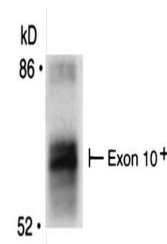
Anti-BIN1 was purified from concentrated tissue culture supernate by Protein G chromatography followed by extensive dialysis against the buffer stated above. BIN1 antibody is specific for human BIN1 protein. A BLAST analysis was used to suggest cross-reactivity with BIN1 from human and mouse sources based on 100% homology with the immunizing sequence. Cross-reactivity with BIN1 from other sources has not been determined.

**Uniprot ID**
[O00499](#)
**NCBI**
[NP\\_004296.1](#)
**Dilution Range**

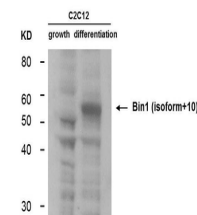
ELISA: 1:5000 - 1:50000, IF: 1:100-1:500, IP: 10-100



Immunofluorescence Microscopy of Mouse A...



Immunoprecipitation of Mouse anti-BIN1 a...



Western Blot of Mouse Anti-BIN1 antibody...