

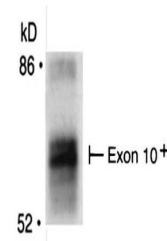
Product Datasheet

BIN1 antibody (orb344473)

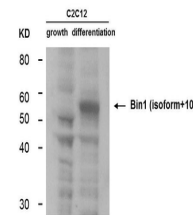
Description	BIN1 antibody
Species/Host	Mouse
Reactivity	Human, Mouse
Conjugation	Unconjugated
Tested Applications	ELISA, IF, IP, WB
Immunogen	Anti-BIN1 (MOUSE) Monoclonal Antibody was produced in mouse by repeated immunizations with BIN1 polypeptide followed by hybridoma development.
Preservatives	0.01% (w/v) Sodium Azide
Form/Appearance	Liquid (sterile filtered)
Concentration	1 mg/ml
Storage	Store vial at -20° C prior to opening. Aliquot contents and freeze at -20° C or below for extended storage. Avoid cycles of freezing and thawing. Centrifuge product if not completely clear after standing at room temperature. This product is stable for several weeks at 4° C as an undiluted liquid. Dilute only prior to immediate use.
Note	For research use only
Application notes	Anti-BIN1 antibody has been tested for use in ELISA, Western Blot, IP, and IF. Specific conditions for reactivity should be optimized by the end user.
Isotype	IgG
Clonality	Monoclonal
Purity	Anti-BIN1 was purified from concentrated tissue culture supernate by Protein G chromatography followed by extensive dialysis against the buffer stated above. BIN1 antibody is specific for human BIN1 protein. A BLAST analysis was used to suggest cross-reactivity with BIN1 from human and mouse sources based on 100% homology with the immunizing sequence. Cross-reactivity with BIN1 from other sources has not been determined.
Uniprot ID	O00499
NCBI	NP_004296.1
Dilution Range	ELISA: 1:5000 - 1:50000, IF: 1:100-1:500, IP: 10-100 µL, WB: 1:500-1:1500
Expiration Date	12 months from date of receipt



Immunofluorescence Microscopy of Mouse A...



Immunoprecipitation of Mouse anti-BIN1 a...



Western Blot of Mouse Anti-BIN1 antibody...