

Product Datasheet

TRPC6 Antibody (orb344462)

Catalog Number	orb344462
Description	TRPC6 antibody
Species/Host	Mouse
Reactivity	Human, Mouse
Conjugation	Unconjugated
Tested Applications	ELISA, IHC, WB
Immunogen	This monoclonal antibody was produced by repeated immunizations with a synthetic peptide corresponding to a region near the carboxy terminus of human TRPC6 protein.
Preservatives	0.01% (w/v) Sodium Azide
Form/Appearance	Liquid (sterile filtered)
Concentration	0.964 mg/mL
Storage	Store vial at -20° C prior to opening. Aliquot contents and freeze at -20° C or below for extended storage. Avoid cycles of freezing and thawing. Centrifuge product if not completely clear after standing at room temperature. This product is stable for several weeks at 4° C as an undiluted liquid. Dilute only prior to immediate use.
Note	For research use only

Biorbyt Ltd.

7 Signet Court, Swann's Road,
Cambridge, CB5 8LA, United Kingdom
Email: info@biorbyt.com, support@biorbyt.com
Phone: [+44 \(0\) 1223 859-353](tel:+44(0)1223859353) | Fax: [+1 \(415\) 651-8558](tel:+1(415)6518558)

Biorbyt LLC.

68 TW Alexander Drive,
Durham, NC, 27713, United States
Email: info@biorbyt.com, support@biorbyt.com
Phone: [+1 \(415\) 906-5211](tel:+1(415)9065211) | Fax: [+1 \(415\) 651-8558](tel:+1(415)6518558)

Application notes

Anti-TRPC6 monoclonal antibody has been tested by ELISA, immunohistochemistry and western blotting. Expect a band approximately 30 kDa in size corresponding to the cytoplasmic domain of TRPC6 protein by western blotting in the appropriate cell lysate or extract. Specific conditions for reactivity should be optimized by the end user. Use formalin-fixed paraffin-embedded sections for immunohistochemistry. No pre-treatment of sample is required. Strong staining was observed in adrenal, Purkinje neurons, cortical neurons, heart, ganglion cells, renal tubules, Sertoli cells, hepatocytes, skeletal muscle, exocrine pancreas, and germinal centers of lymphoid follicles. Moderate staining was observed in colon epithelium and plasma cells, B-lymphocytes, and parafollicular cells of the thyroid. Faint staining was seen in respiratory epithelium. Prostate and placenta were negative for staining. The antibody produced minimal to no background staining and appeared very specific at 2.5 µg/mL.

Isotype

IgG1

Clonality

Monoclonal

Clone Number

3F2.H10.F2

Antibody Type

Primary Antibody

Purity

This product was purified from concentrated tissue culture supernate by Protein A chromatography. This antibody is specific for human TRPC6 protein. A BLAST analysis was used to suggest cross-reactivity with TRPC6 from chimpanzee based on 100% homology with the immunizing sequence. Cross-reactivity with TRPC6 from other sources has not been determined.

Uniprot ID**Q9Y210****NCBI****5730102****Dilution Range**

ELISA: 1:10,000 - 1:50,000, IHC: 2.5 µg/mL, WB: 1:500- 1:2,000

Expiration Date

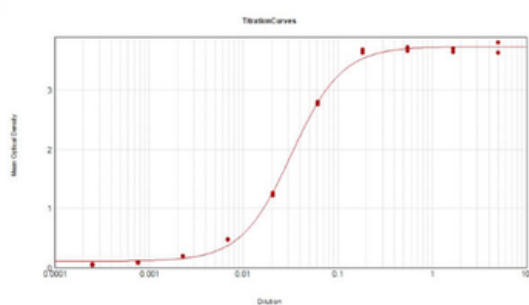
12 months from date of receipt.

Biorbyt Ltd.

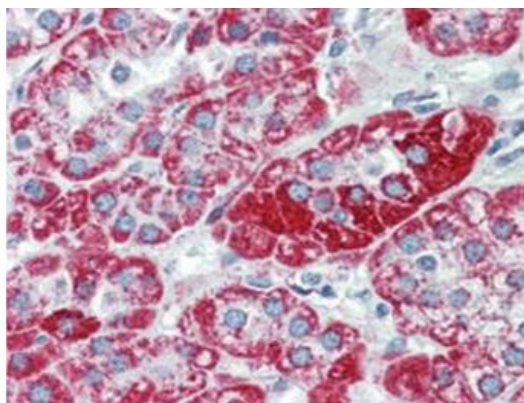
7 Signet Court, Swann's Road,
Cambridge, CB5 8LA, United Kingdom
Email: info@biorbyt.com, support@biorbyt.com
Phone: [+44 \(0\) 1223 859-353](tel:+44(0)1223859353) | Fax: [+1 \(415\) 651-8558](tel:+1(415)6518558)

Biorbyt LLC.

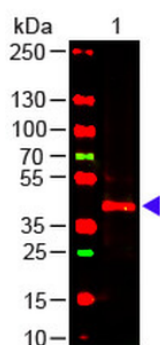
68 TW Alexander Drive,
Durham, NC, 27713, United States
Email: info@biorbyt.com, support@biorbyt.com
Phone: [+1 \(415\) 906-5211](tel:+1(415)9065211) | Fax: [+1 \(415\) 651-8558](tel:+1(415)6518558)



ELISA Results of Mouse Anti-TRPC6 Antibody. Each well was coated in duplicate with 0.1 μ g of conjugate. The working dilution is 1:31000. The starting dilution of antibody was 5 μ g/ml and the X-axis represents the Log10 of a 3-fold dilution. This titration is a 4-parameter curve fit where the IC50 is defined as the titer of the antibody. Assay performed using HRP conjugation Stabilizer, Rabbit Anti-Mouse IgG HRP conjugated (p/n orb347506) and TMB substrate (p/n orb348651).



Immunohistochemistry using Biorbyt's anti-TRPC6 monoclonal antibody shows detection of TRPC6 in human adrenal (cortex) tissue (40X). The antibody was used a dilution to 2.5 μ g/ml. The image shows strong staining with minimal background staining. Tissue was formalin fixed and paraffin embedded. No pre-treatment of sample was required. The image shows the localization of antibody as the precipitated red signal, with a hematoxylin purple nuclear counterstain.



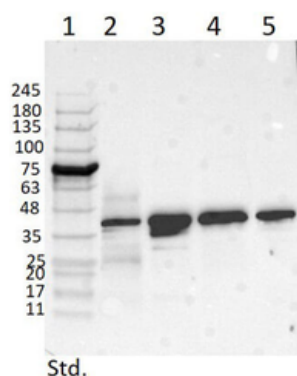
Western Blot of Mouse anti-TRPC6 Antibody. Lane 1: Mouse Kidney WCL (p/n orb348717). Load: 10 μ g per lane. Primary antibody: TRPC6 Antibody at 1:1000 for overnight at 4°C. Secondary antibody: donkey anti-mouse DyLight™ 649 at 1:20000 for 30 min at RT. Block: orb348637 for 30 min at RT.

Biorbyt Ltd.

7 Signet Court, Swann's Road,
Cambridge, CB5 8LA, United Kingdom
Email: info@biorbyt.com, support@biorbyt.com
Phone: [+44 \(0\) 1223 859-353](tel:+44(0)1223859353) | Fax: [+1 \(415\) 651-8558](tel:+1(415)6518558)

Biorbyt LLC.

68 TW Alexander Drive,
Durham, NC, 27713, United States
Email: info@biorbyt.com, support@biorbyt.com
Phone: [+1 \(415\) 906-5211](tel:+1(415)9065211) | Fax: [+1 \(415\) 651-8558](tel:+1(415)6518558)



Western Blot of Mouse Anti-TRPC6 Antibody. Lane 1: Opal Prestained Molecular Weight Marker. Lane 2: Mouse Pancreas Tissue Lysate (p/n orb348719) [10 µg]. Lane 3: MCF-7 Whole Cell Lysate (p/n orb348664) [10 µg]. Lane 4: A431 Whole Cell Lysate (p/n orb348665) [10 µg]. Lane 5: Jurkat Whole Cell Lysate (p/n orb348674) [10 µg]. Primary Antibody: Anti-TRPC6 at 1 µg/ml overnight at 2-8°C. Secondary Antibody: Rabbit Anti-Mouse IgG Peroxidase (p/n orb347506) 1:40000 for 30 mins at RT. Blocking Buffer: BlockOut Buffer (p/n orb348644) for 30 mins at RT. Predicted MW: ~30kDa. Observed MW: ~40 kDa. Exposure: 5sec.

Biorbyt Ltd.

7 Signet Court, Swann's Road,
Cambridge, CB5 8LA, United Kingdom
Email: info@biorbyt.com, support@biorbyt.com
Phone: [+44 \(0\) 1223 859-353](tel:+44(0)1223859353) | Fax: [+1 \(415\) 651-8558](tel:+1(415)6518558)

Biorbyt LLC.

68 TW Alexander Drive,
Durham, NC, 27713, United States
Email: info@biorbyt.com, support@biorbyt.com
Phone: [+1 \(415\) 906-5211](tel:+1(415)9065211) | Fax: [+1 \(415\) 651-8558](tel:+1(415)6518558)