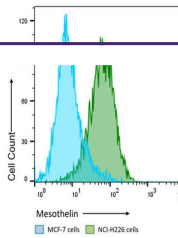


---

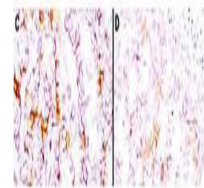
## Product Datasheet

### Mesothelin antibody (orb344443)

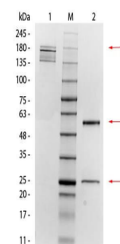
<b>Description</b>	Mesothelin antibody
<b>Species/Host</b>	Mouse
<b>Reactivity</b>	Human
<b>Conjugation</b>	Unconjugated
<b>Tested Applications</b>	ELISA, FC, IHC, WB
<b>Immunogen</b>	This antibody was produced in mesothelin-deficient mice by immunizations with plasmid cDNA encoding human MSLN full length protein followed by a single boost of a recombinant human mesothelin-Fc fusion protein.
<b>Preservatives</b>	0.01% (w/v) Sodium Azide
<b>Form/Appearance</b>	Liquid (sterile filtered)
<b>Concentration</b>	1.0 mg/mL
<b>Storage</b>	Store vial at -20° C or below prior to opening. This vial contains a relatively low volume of reagent (25 µL). To minimize loss of volume dilute 1:10 by adding 225 µL of the buffer stated above directly to the vial. Recap, mix thoroughly and briefly centrifuge to collect the volume at the bottom of the vial. Use this intermediate dilution when calculating final dilutions as recommended below. Store the vial at -20°C or below after dilution. Avoid cycles of freezing and thawing.
<b>Note</b>	For research use only
<b>Application notes</b>	This antibody has been tested for use in immunohistochemistry, Flow cytometry, and western blotting. Specific conditions for reactivity should be optimized by the end user. Expect a band approximately 40 kDa in size corresponding to mature mesothelin by western blotting in the appropriate cell lysate or extract. For immunohistochemistry, archival PEFF human tissues were deparaffinized followed by hydration. Antigen-retrieval is recommended. Block tissues with 1% BSA in PBS for 30 min at 23° C. Antibodies are diluted in 1% BSA and reacted with tissue for 60 min at room temperature.
<b>Isotype</b>	IgG2a
<b>Clonality</b>	Monoclonal
<b>Purity</b>	This antibody is directed against human mesothelin protein. This product was purified from tissue



Flow Cytometry Results of Anti-Mesotheli...



Immunohistochemistry using Biorbyt's ant...



SDS-PAGE of Mouse anti-Mesothelin Monocli...