

---

## Product Datasheet

### Tubulin alpha antibody (orb344425)

**Description**

Tubulin alpha antibody

**Species/Host**

Mouse

**Reactivity**

Human

**Conjugation**

Unconjugated

**Tested**

ELISA, IF, IHC, Multiplex Assay, WB

**Applications**
**Immunogen**

Anti-Tubulin Loading Control Antibody was produced by repeated immunizations with a synthetic peptide corresponding to residues near the C terminal end of human alpha tubulin protein.

**Preservatives**

0.01% (w/v) Sodium Azide

**Form/Appearance**

Liquid (sterile filtered)

**Concentration**

1.0 mg/mL

**Storage**

Store Anti-Tubulin Antibody at -20° C prior to opening. Aliquot Loading Control Antibody and freeze at -20° C or below for extended storage. Avoid cycles of freezing and thawing. Centrifuge Tubulin Loading Control Antibody if not completely clear after standing at room temperature. This Anti-Tubulin Loading Control Antibody is stable for several weeks at 4° C as an undiluted liquid. Dilute only prior to immediate use.

**Note**

For research use only

**Application notes**

Anti-Tubulin Antibody has been tested for use in ELISA, immunohistochemistry, immunofluorescence microscopy and western blot. Specific conditions for reactivity should be optimized by the end user. Expect a band at ~50 kDa in size corresponding to alpha tubulin by western blotting in most cell lysates or extracts.

**Isotype**

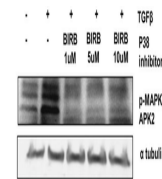
IgG1

**Clonality**

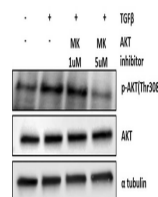
Monoclonal

**Purity**

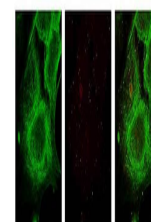
Anti-Tubulin Loading Control Antibody was purified by Protein A chromatography. This Loading Control antibody is directed against alpha tubulin. A BLAST analysis was used to suggest antibody reactivity with alpha tubulin from a wide range of organisms, including avian, mammalian aquatic, parasitic and alga sources based on 100% homology for the immunogen sequence. Cross reactivity will occur with all isoforms of alpha tubulin. Such broad reactivity makes this antibody useful as an excellent loading control.

**Uniprot ID**
**P68363**
**A**


AKT and p38 are not required for TGF-β...

**D**


AKT and p38 are not required for TGF-β...

**E**


Anti-alpha-Tubulin (MOUSE) Monoclonal An...

Biorbyt Ltd.

7 Signet Court, Swann's Road, Cambridge, CB5 8LA, United Kingdom

 Email: [info@biorbyt.com](mailto:info@biorbyt.com) | Phone: +44 (0) 1223 859-353 | Fax: +44 (0)1223 280 240

Biorbyt LLC.

68 TW Alexander Drive&lt;br&gt;Research Triangle Park&lt;br&gt;Durham, North Carolina&lt;br&gt;27709. United States

 Email: [info@biorbyt.com](mailto:info@biorbyt.com) | Phone: +1 (415) 906-5211 | Fax: +1 (415) 651-8558

**Expiration Date**

12 months from date of receipt.