

---

## Product Datasheet

### 6X His Tag antibody (orb344413)

**Description**

6X His Tag antibody

**Species/Host**

Mouse

**Conjugation**

Unconjugated

**Tested Applications**

ELISA, FC, IHC, IP, WB

**Immunogen**

This His antibody was produced in mice by repeated immunizations with 6X His epitope tag peptide H-H-H-H-H-H conjugated to KLH using maleimide.

**Preservatives**

0.01% (w/v) Sodium Azide

**Form/Appearance**

Liquid (sterile filtered)

**Concentration**

1.0 mg/mL

**Storage**

Store 6X His Tag Antibody at -20° C or below prior to opening. This vial contains a relatively low volume of reagent (25 µL). To minimize loss of volume dilute 1:10 by adding 225 µL of the buffer stated above directly to the vial. Recap, mix thoroughly and briefly centrifuge to collect the volume at the bottom of the vial. Use this intermediate dilution when calculating final dilutions as recommended below. Store the vial at -20°C or below after dilution. Avoid cycles of freezing and thawing.

**Note**

For research use only

**Application notes**

Anti-6X His is optimally suited for monitoring expression of His-tagged fusion proteins. As such, Anti-6X His/6XHIS can be used to identify fusion proteins that contain the 6X His epitope. The antibody recognizes the His tag fused either to the amino- or carboxy- termini of targeted proteins. This antibody has been tested by ELISA, SDS-PAGE, and western blotting against both the immunizing peptide and His-containing recombinant proteins. Although not tested, this antibody is likely functional for immunoprecipitation and immunocytochemistry.

**Isotype**

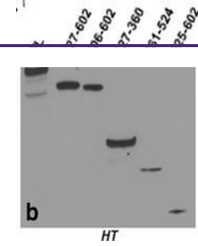
IgG1

**Clonality**

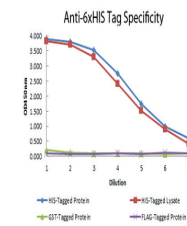
Monoclonal

**Purity**

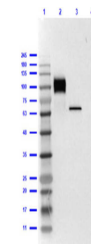
6X His antibody was purified from concentrated tissue culture supernate by Protein A chromatography and is directed against the 6X His motif and is useful in determining its presence in various assays. This polyclonal anti-6X His tag antibody detects over-expressed proteins containing the 6X His epitope tag. To date, this antibody has reacted with all His tagged proteins so far tested. In western blotting of bacterial



Characterization of purity and antigenic...



ELISA of Mouse anti-6xHis Tag Antibody. ...



Western Blot of Mouse Anti-6X HIS Epitop...