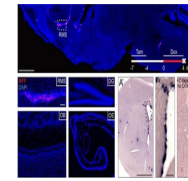
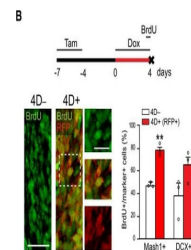

Product Datasheet

RFP antibody (orb344410)

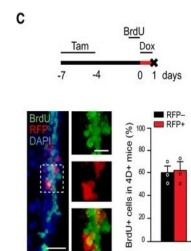
Description	RFP antibody
Species/Host	Mouse
Reactivity	Other
Conjugation	Unconjugated
Tested Applications	ELISA, FC, IF, IP, WB
Immunogen	The immunogen is a Red Fluorescent Protein (RFP) fusion protein corresponding to the full-length amino acid sequence (234aa) derived from the mushroom anemone <i>Discosoma</i> .
Preservatives	0.01% (w/v) Sodium Azide
Form/Appearance	Liquid (sterile filtered)
Concentration	1.02 mg/ml
Storage	Store anti-RFP at -20° C prior to opening. Aliquot contents and freeze at -20° C or below for extended storage. Avoid cycles of freezing and thawing. Centrifuge product if not completely clear after standing at room temperature. This product is stable for several weeks at 4° C as an undiluted liquid. Dilute only prior to immediate use.
Note	For research use only
Application notes	Anti-RFP antibody has been tested by ELISA, SDS-Page, and Western blot and is designed to detect Red Fluorescent Protein and its variants. This antibody can be used to detect RFP by ELISA (sandwich or capture) for the direct binding of antigen. Biotin conjugated anti-RFP used in a sandwich ELISA with unconjugated anti-RFP is well suited to titrate RFP in solution. The detection antibody conjugated to biotin is subsequently reacted with streptavidin conjugated HRP (code # S000-03). Fluorochrome conjugated anti-RFP can be used to detect RFP by immunofluorescence microscopy in cell expression systems and can detect RFP containing inserts. Significant amplification of signal is achieved using fluorochrome conjugated anti-RFP relative to the fluorescence of RFP alone. For immunoblotting use either alkaline phosphatase or peroxidase conjugated anti-RFP to detect RFP or RFP containing proteins on western blots. Optimal titers for applications should be determined by the researcher.
Isotype	IgG2a
Clonality	Monoclonal
Purity	Anti-RFP Monoclonal Antibody was purified from concentrated tissue culture supernate by Protein A



Characterization of the transgenic model...



Characterization of the transgenic model...



Characterization of the transgenic model...